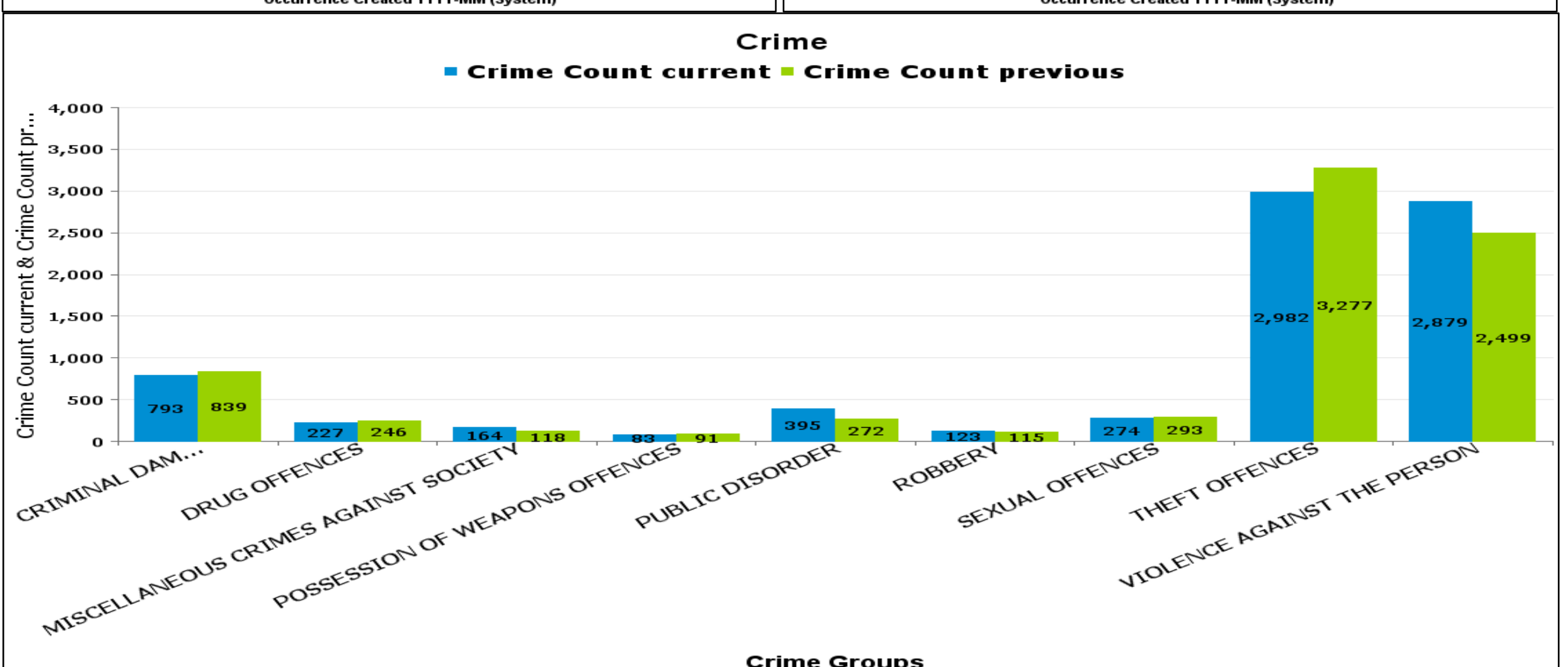
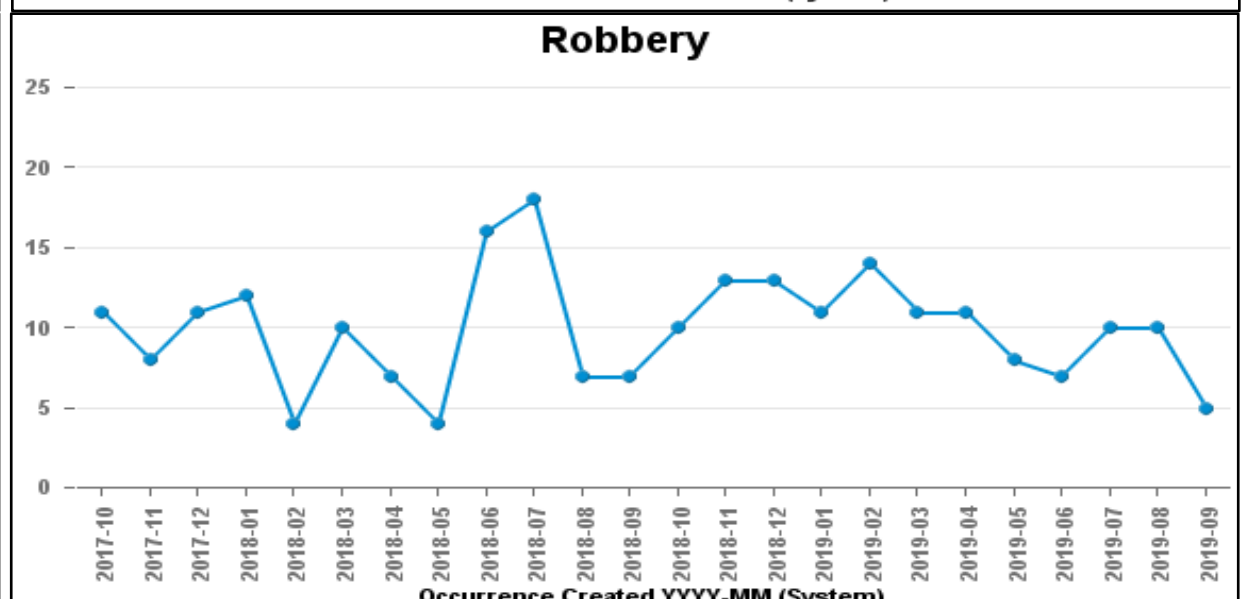
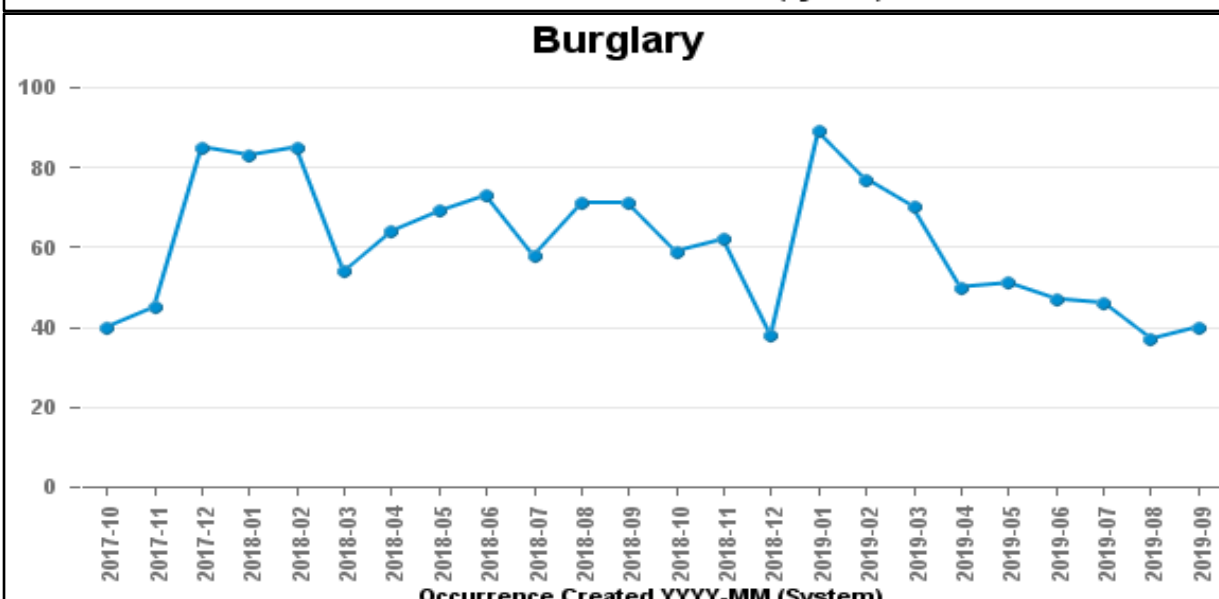
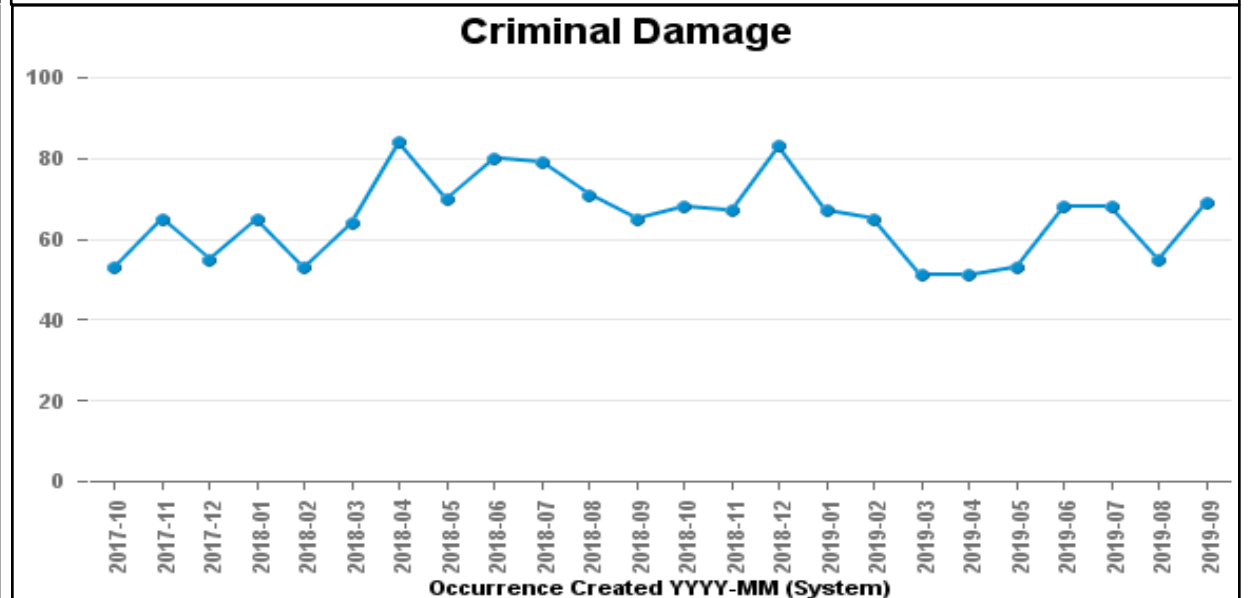
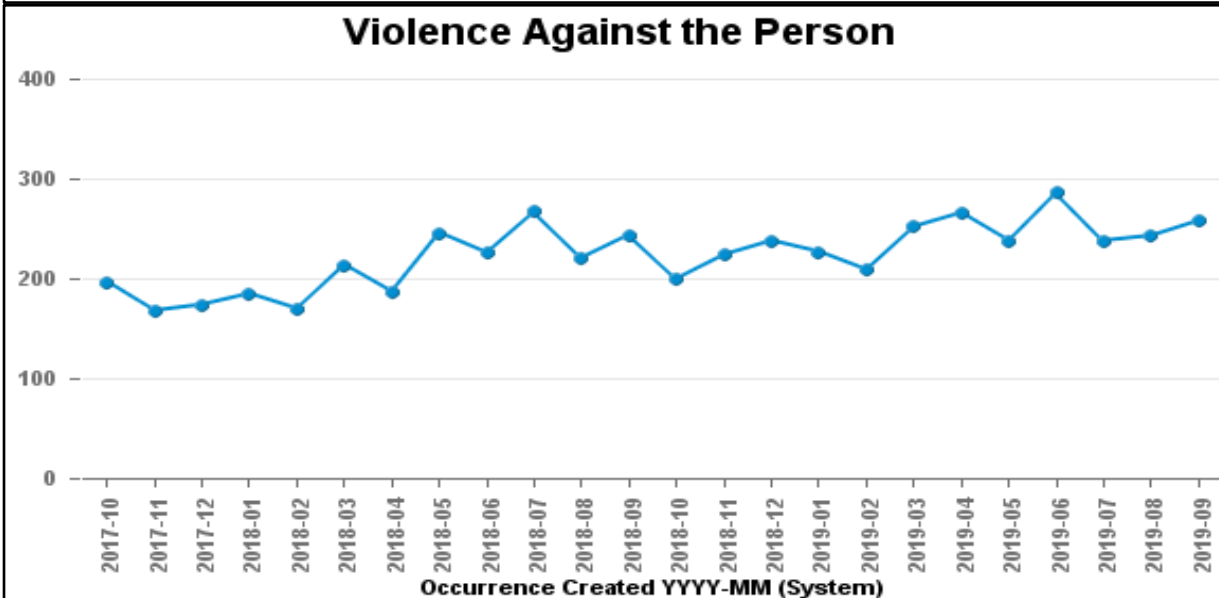
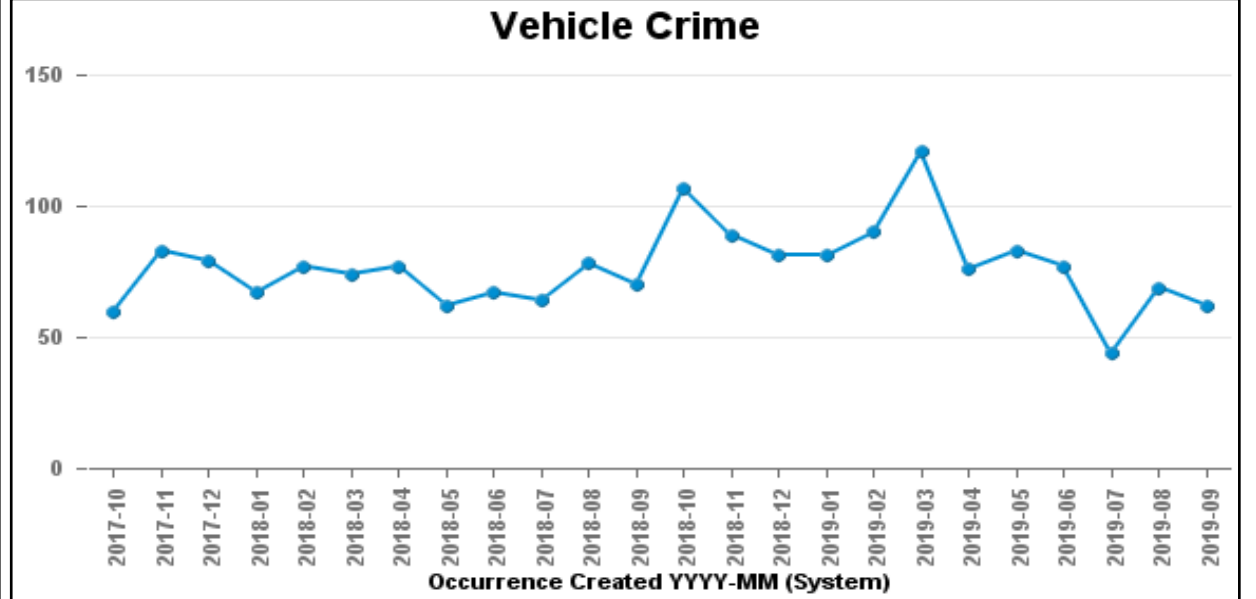
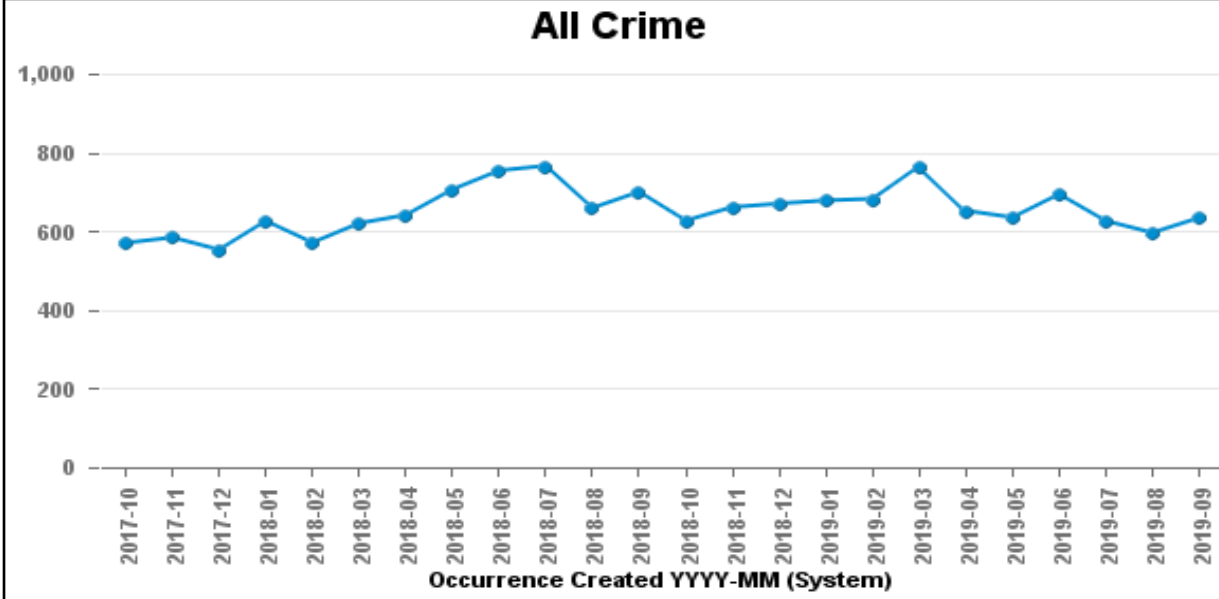


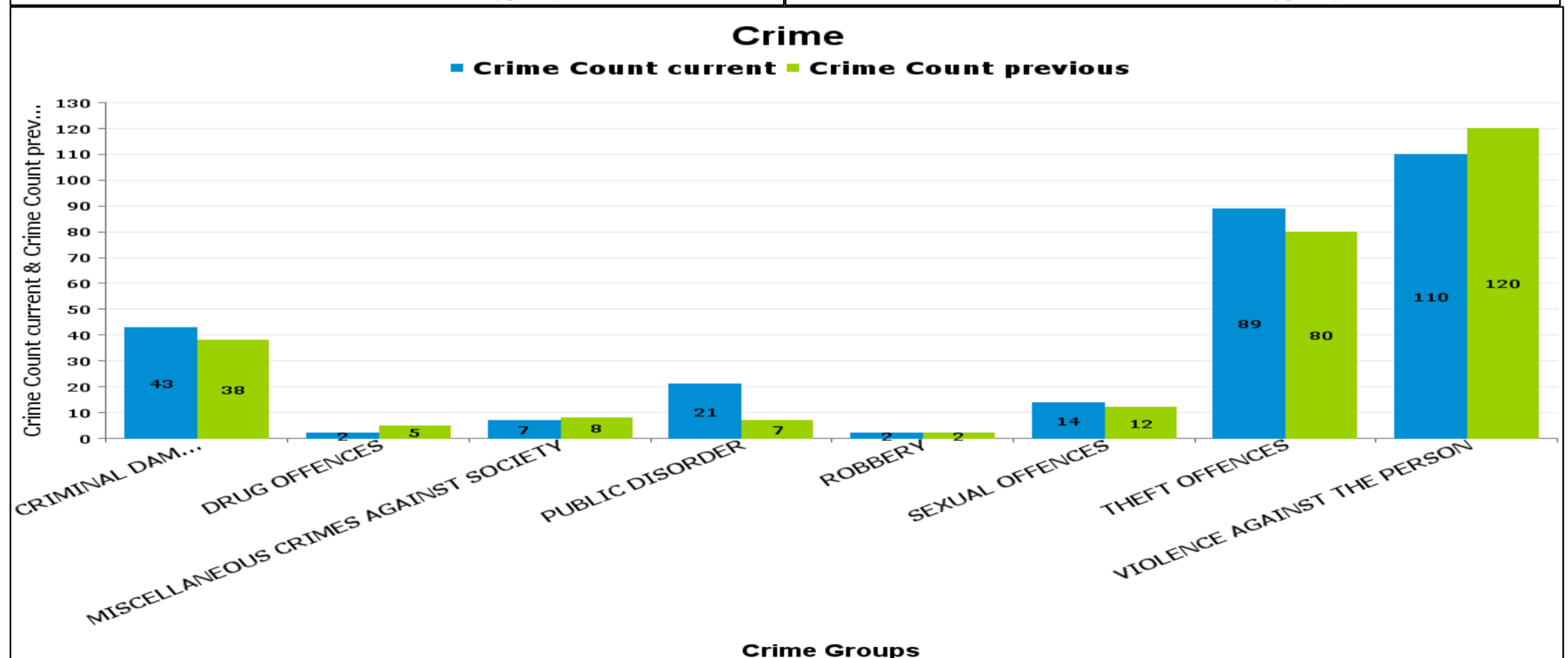
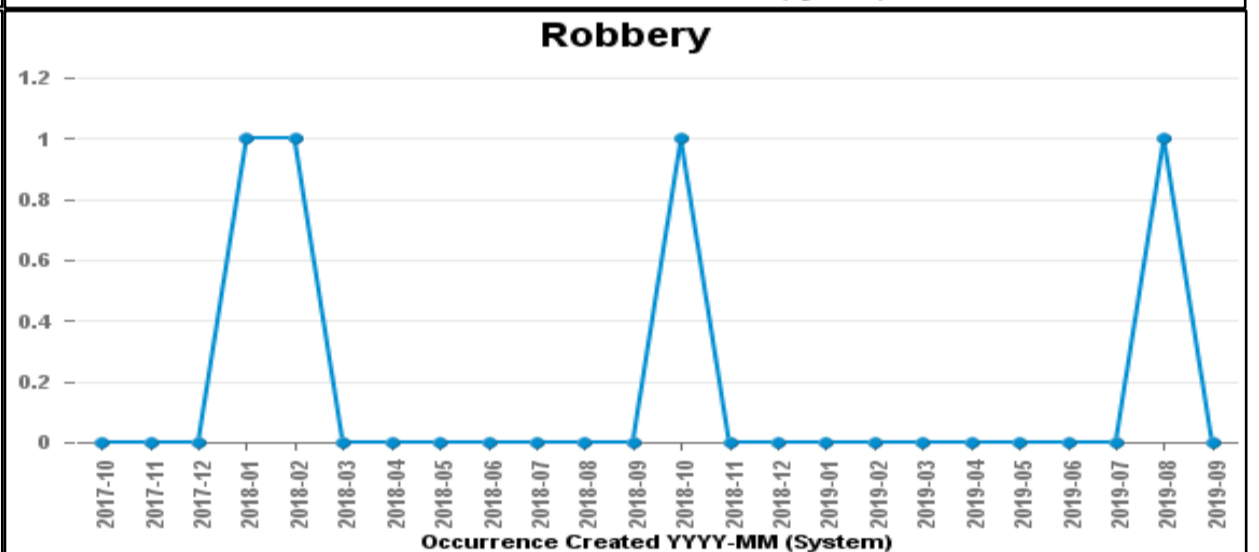
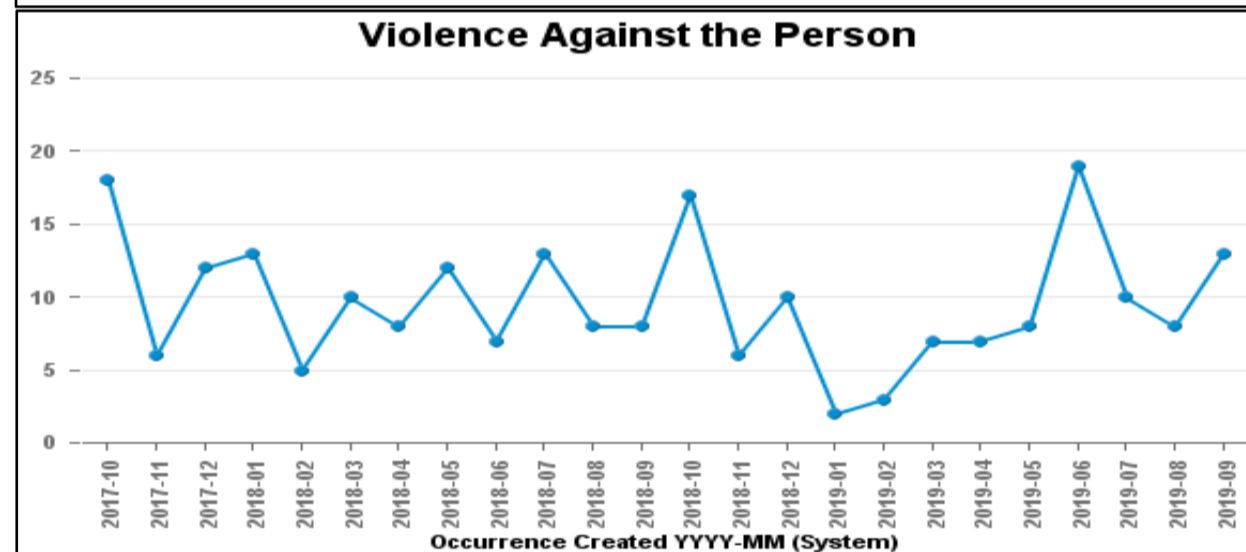
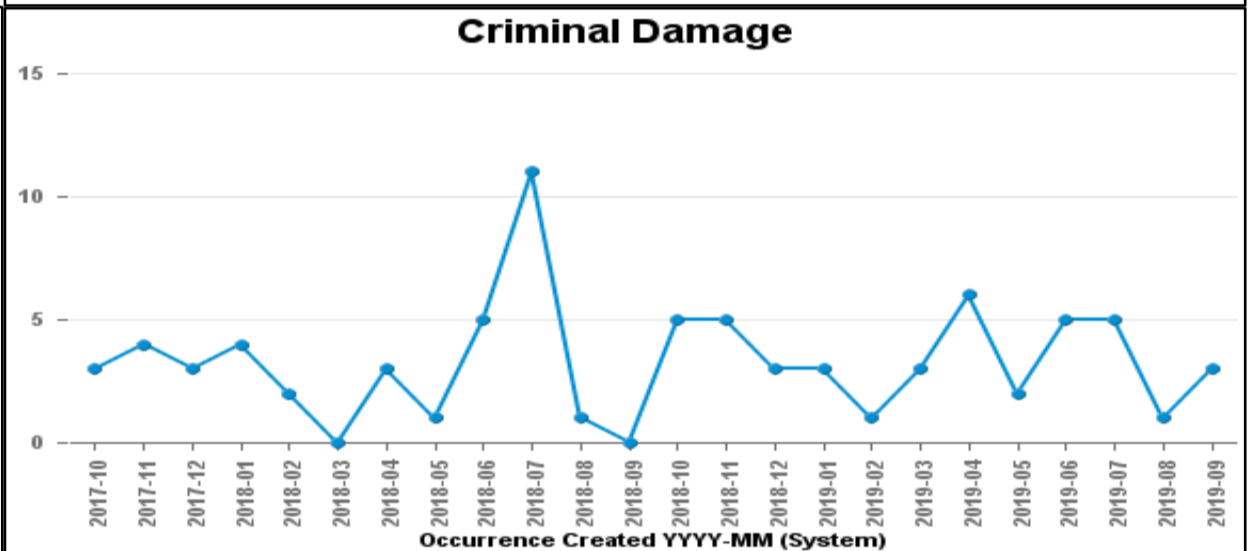
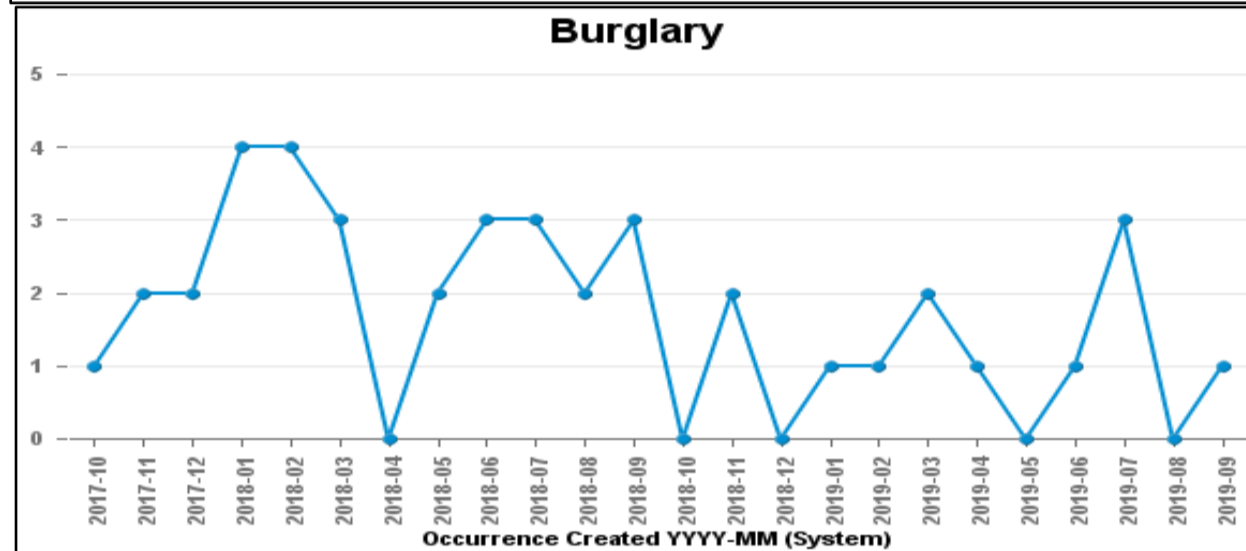
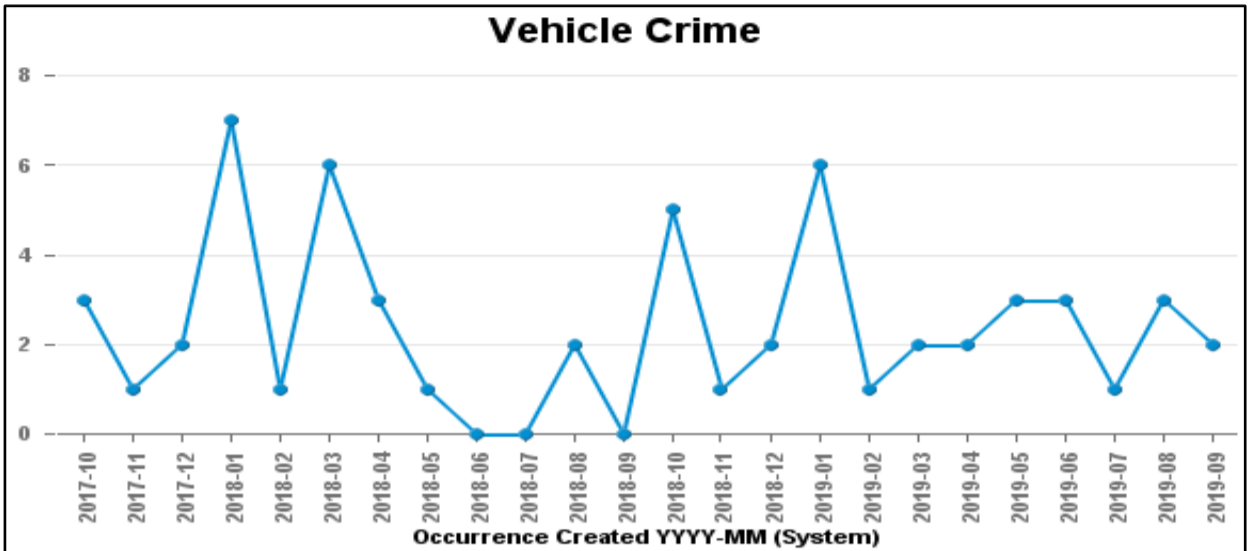
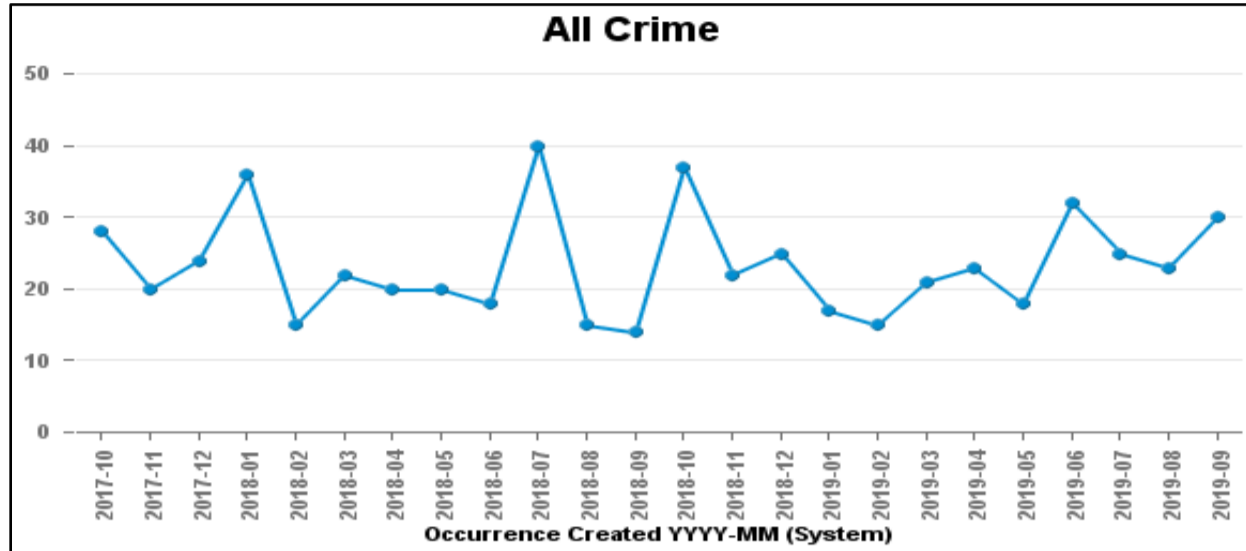
# Kettering Sector

Crime Group	Current 12 Months	Previous 12 Months	+/- Crime	% Change	Number of Resolved Crimes	Resolution Rate (12 Months)
CRIMINAL DAMAGE & ARSON	793	839	-46	-5.48%	127	16.02%
DRUG OFFENCES	227	246	-19	-7.72%	177	77.97%
MISCELLANEOUS CRIMES AGAINST SOCIETY	164	118	46	38.98%	19	11.59%
POSSESSION OF WEAPONS OFFENCES	83	91	-8	-8.79%	38	45.78%
PUBLIC DISORDER	395	272	123	45.22%	85	21.52%
ROBBERY	123	115	8	6.96%	22	17.89%
SEXUAL OFFENCES	274	293	-19	-6.48%	29	10.58%
THEFT OFFENCES	2982	3277	-295	-9.00%	314	10.53%
VIOLENCE AGAINST THE PERSON	2879	2499	380	15.21%	490	17.02%
<b>Sum:</b>	<b>7920</b>	<b>7750</b>	<b>170</b>	<b>2.19%</b>	<b>1301</b>	<b>16.43%</b>



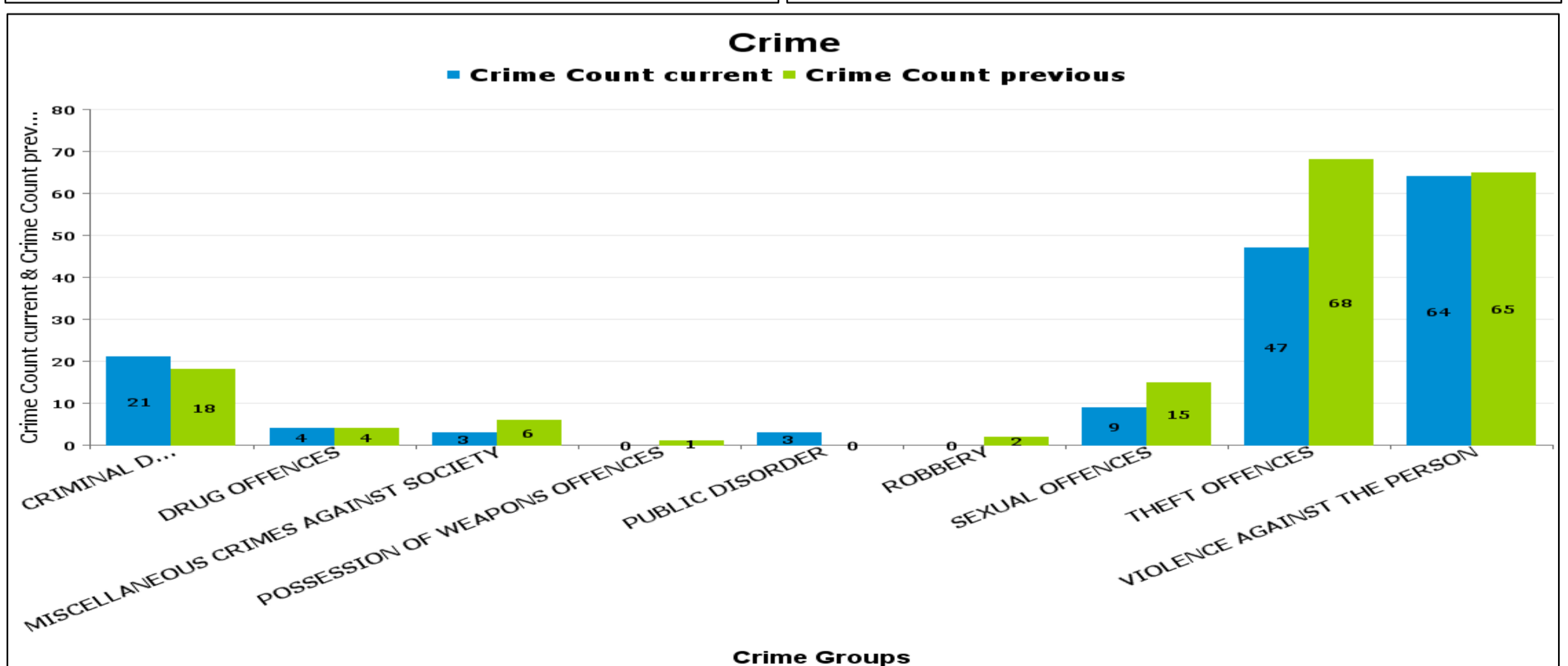
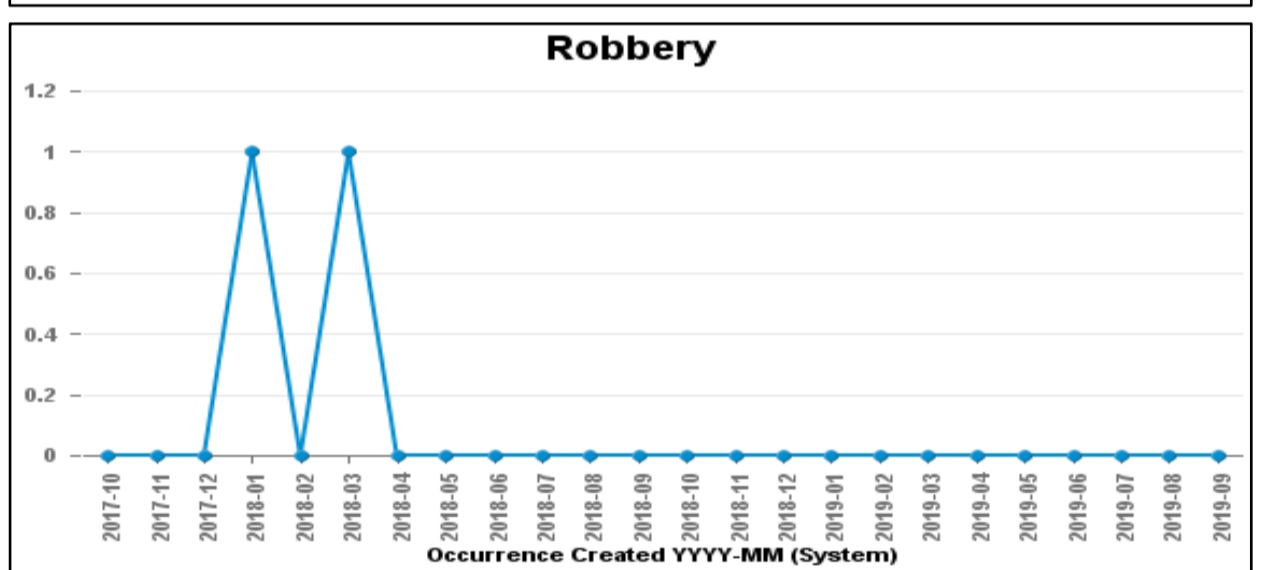
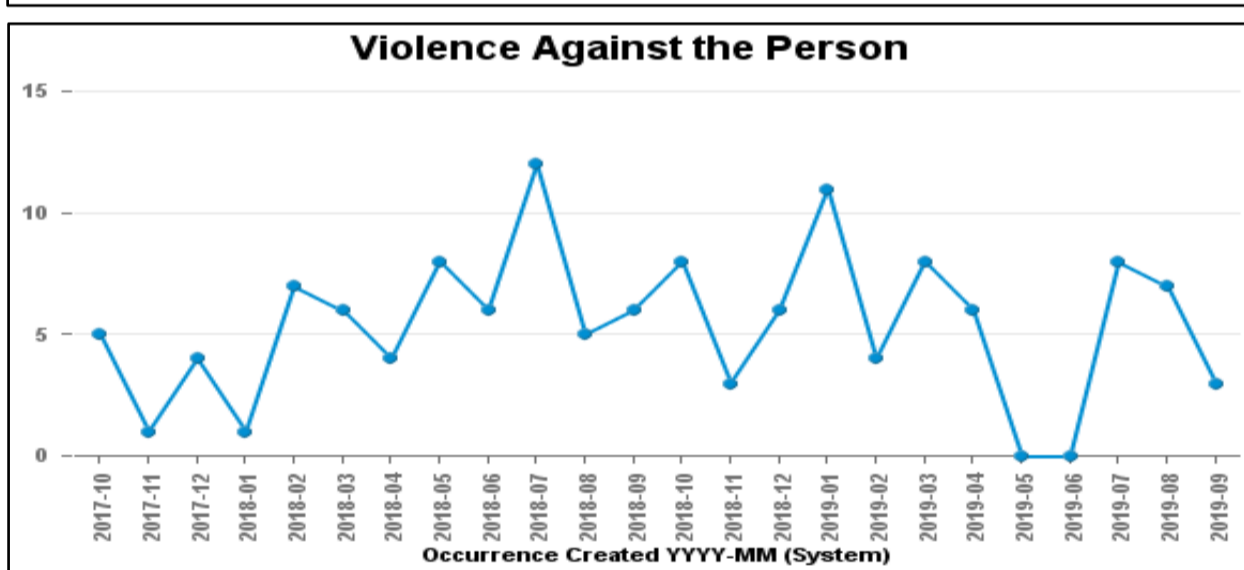
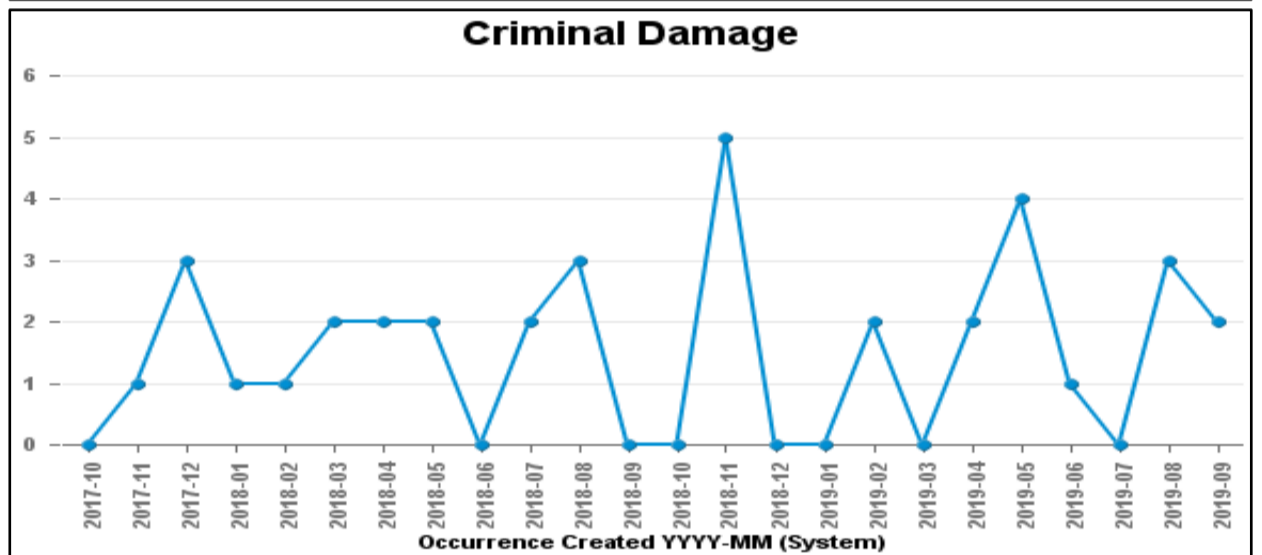
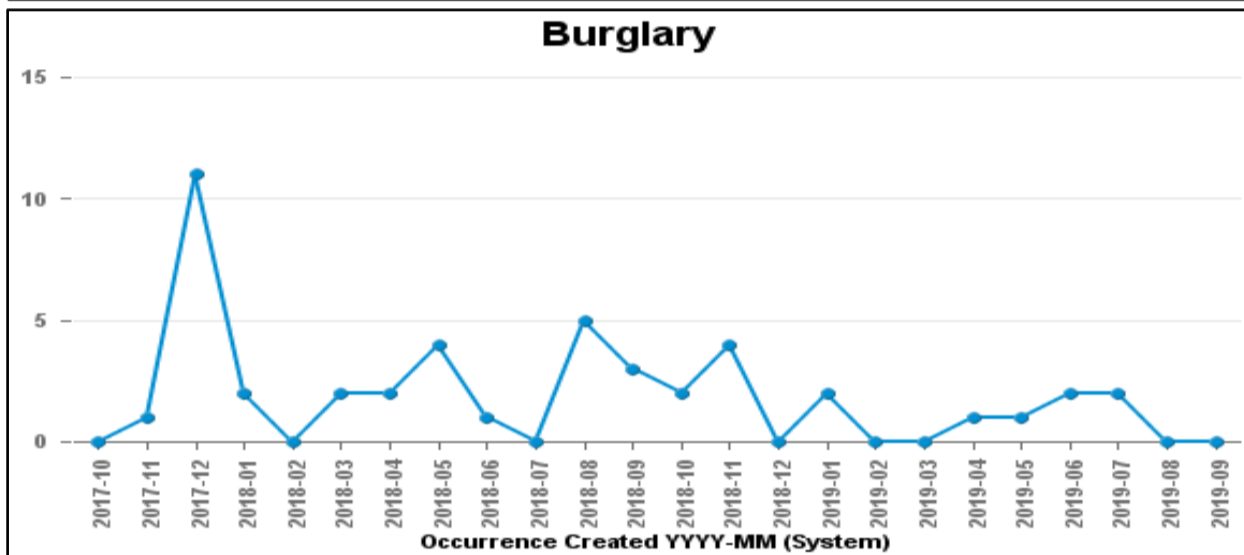
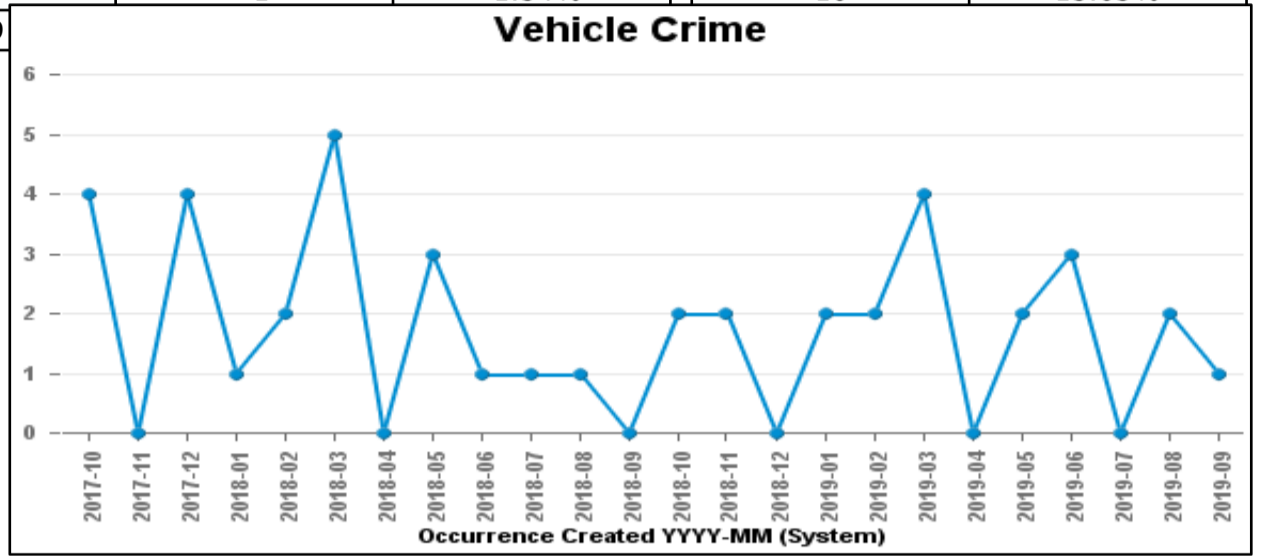
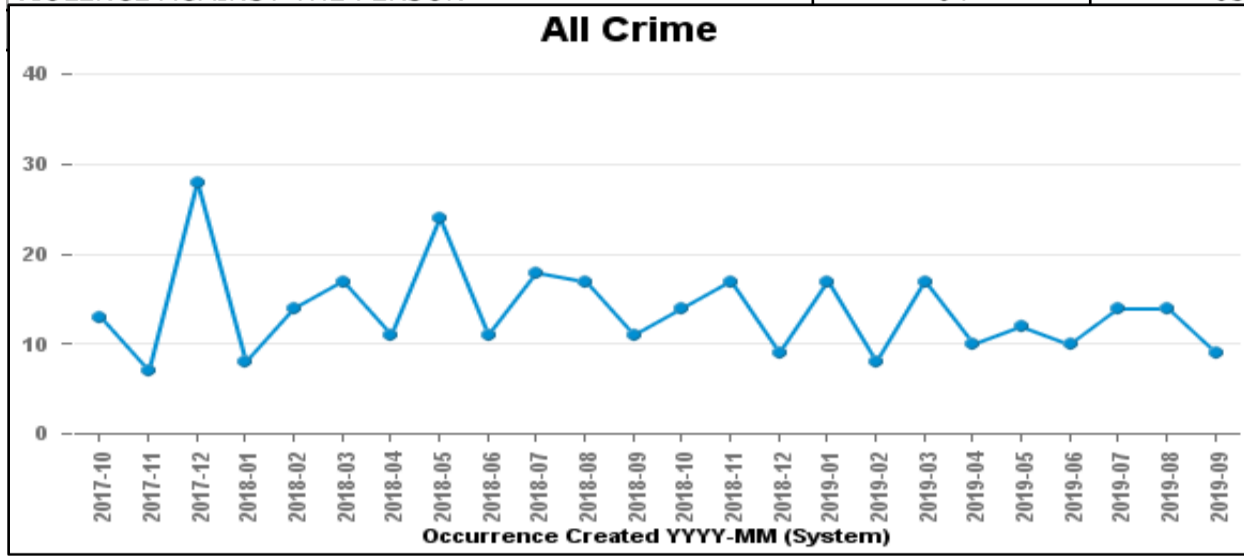
# DESBOROUGH LOATLAND

Crime Group	Current 12 Months	Previous 12 Months	+/- Crime	% Change	Number of Resolved Crimes	Resolution Rate (12 Months)
CRIMINAL DAMAGE & ARSON	43	38	5	13.16%	3	6.98%
DRUG OFFENCES	2	5	-3	-60.00%	4	200.00%
MISCELLANEOUS CRIMES AGAINST SOCIETY	7	8	-1	-12.50%	0	0.00%
PUBLIC DISORDER	21	7	14	200.00%	4	19.05%
ROBBERY	2	2	0	0.00%	0	0.00%
SEXUAL OFFENCES	14	12	2	16.67%	1	7.14%
THEFT OFFENCES	89	80	9	11.25%	0	0.00%
VIOLENCE AGAINST THE PERSON	110	120	-10	-8.33%	29	26.36%
<b>Sum:</b>	<b>288</b>	<b>272</b>	<b>16</b>	<b>5.88%</b>	<b>41</b>	<b>14.24%</b>



# DESBOROUGH ST GILES

Crime Group	Current 12 Months	Previous 12 Months	+/- Crime	% Change	Number of Resolved Crimes	Resolution Rate (12 Months)
CRIMINAL DAMAGE & ARSON	21	18	3	16.67%	1	4.76%
DRUG OFFENCES	4	4	0	0.00%	4	100.00%
MISCELLANEOUS CRIMES AGAINST SOCIETY	3	6	-3	-50.00%	1	33.33%
POSSESSION OF WEAPONS OFFENCES	0	1	-1	-100.00%	0	#DIV/0
PUBLIC DISORDER	3	0	3	#DIV/0	0	0.00%
ROBBERY	0	2	-2	-100.00%	1	#DIV/0
SEXUAL OFFENCES	9	15	-6	-40.00%	6	66.67%
THEFT OFFENCES	47	68	-21	-30.88%	0	0.00%
VIOLENCE AGAINST THE PERSON	64	65	-1	-1.54%	10	15.63%

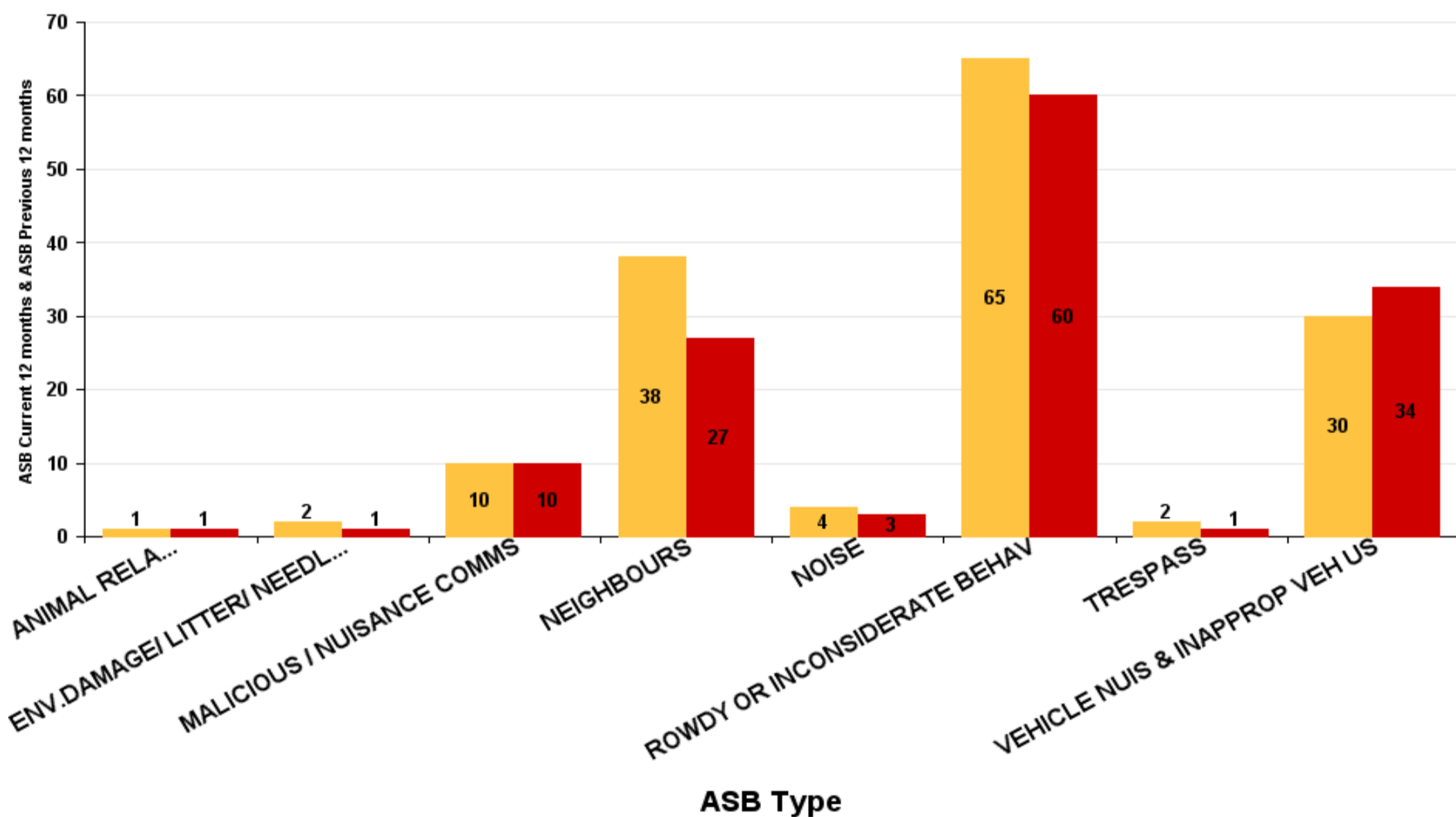


## Desborough Loatland

ASB Type	Current 12 mths	Previous 12 mths	+/- Crime	% Change
ANIMAL RELATED INC ANTI-SOCIAL	1	1	0	0.00%
ENV.DAMAGE/ LITTER/ NEEDLES	2	1	1	100.00%
MALICIOUS / NUISANCE COMMS	10	10	0	0.00%
NEIGHBOURS	38	27	11	40.74%
NOISE	4	3	1	33.33%
ROWDY OR INCONSIDERATE BEHAV	65	60	5	8.33%
TRESPASS	2	1	1	100.00%
VEHICLE NUIS & INAPPROP VEH US	30	34	-4	-11.76%
<b>Sum:</b>	<b>152</b>	<b>137</b>	<b>15</b>	<b>10.95%</b>

### ASB

■ ASB Current 12 months ■ ASB Previous 12 months



## Desborough St Giles

ASB Type	Current 12 mths	Previous 12 mths	+/- Crime	% Change
ANIMAL RELATED INC ANTI-SOCIAL	3	1	2	200.00%
ENV.DAMAGE/ LITTER/ NEEDLES		1	-1	-100.00%
HATE INC (NOT NOTIFIABLE CRIME		2	-2	-100.00%
MALICIOUS / NUISANCE COMMS	6	5	1	20.00%
NEIGHBOURS	3	12	-9	-75.00%
NOISE	3	2	1	50.00%
ROWDY OR INCONSIDERATE BEHAV	42	47	-5	-10.64%
VEHICLE NUIS & INAPPROP VEH US	10	9	1	11.11%
<b>Sum:</b>	<b>67</b>	<b>79</b>	<b>-12</b>	<b>-15.19%</b>

### ASB

■ ASB Current 12 months ■ ASB Previous 12 months

