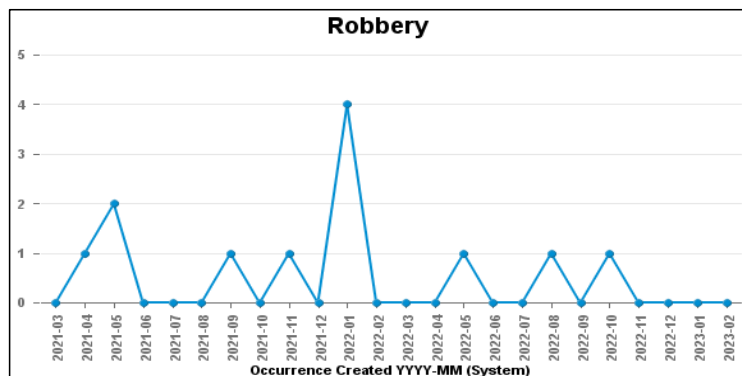
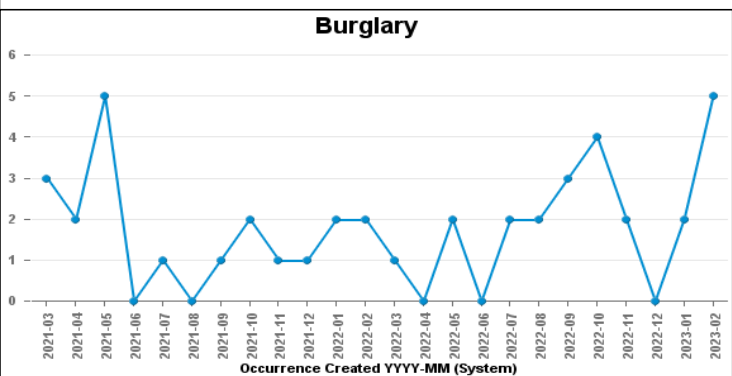
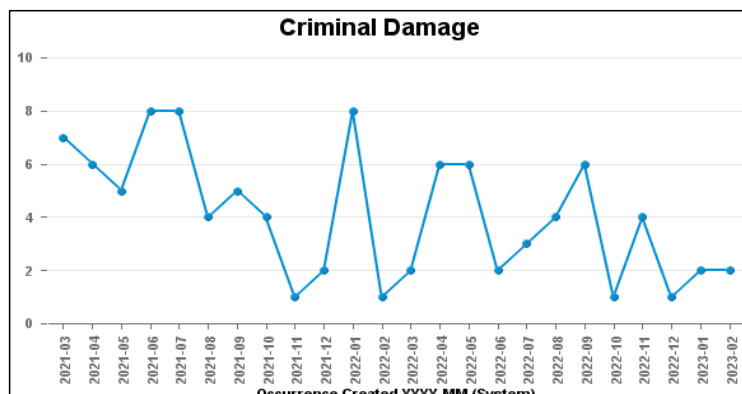
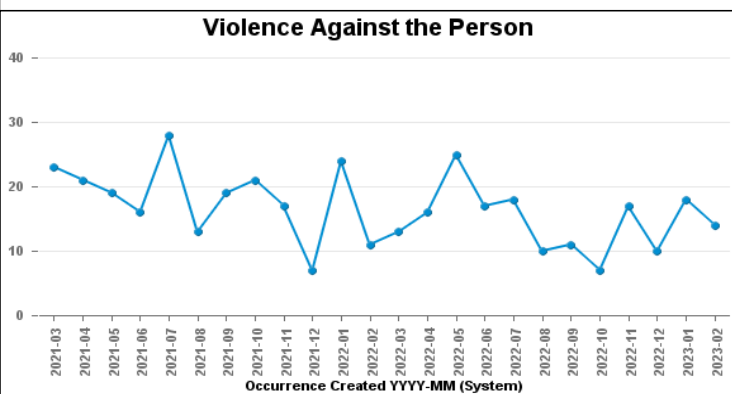
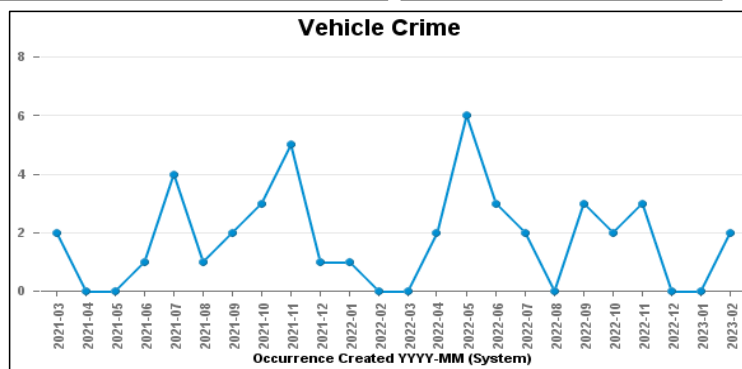
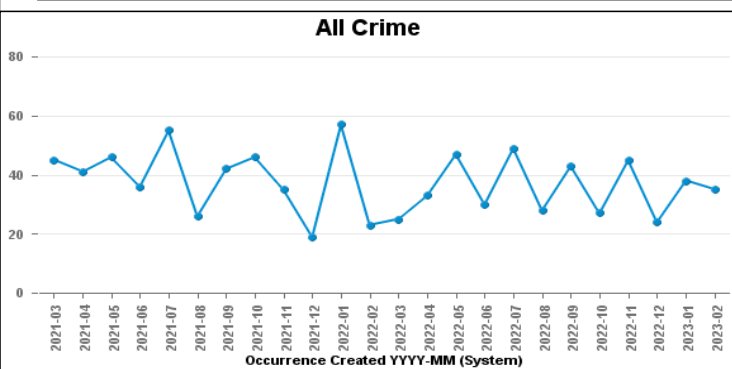


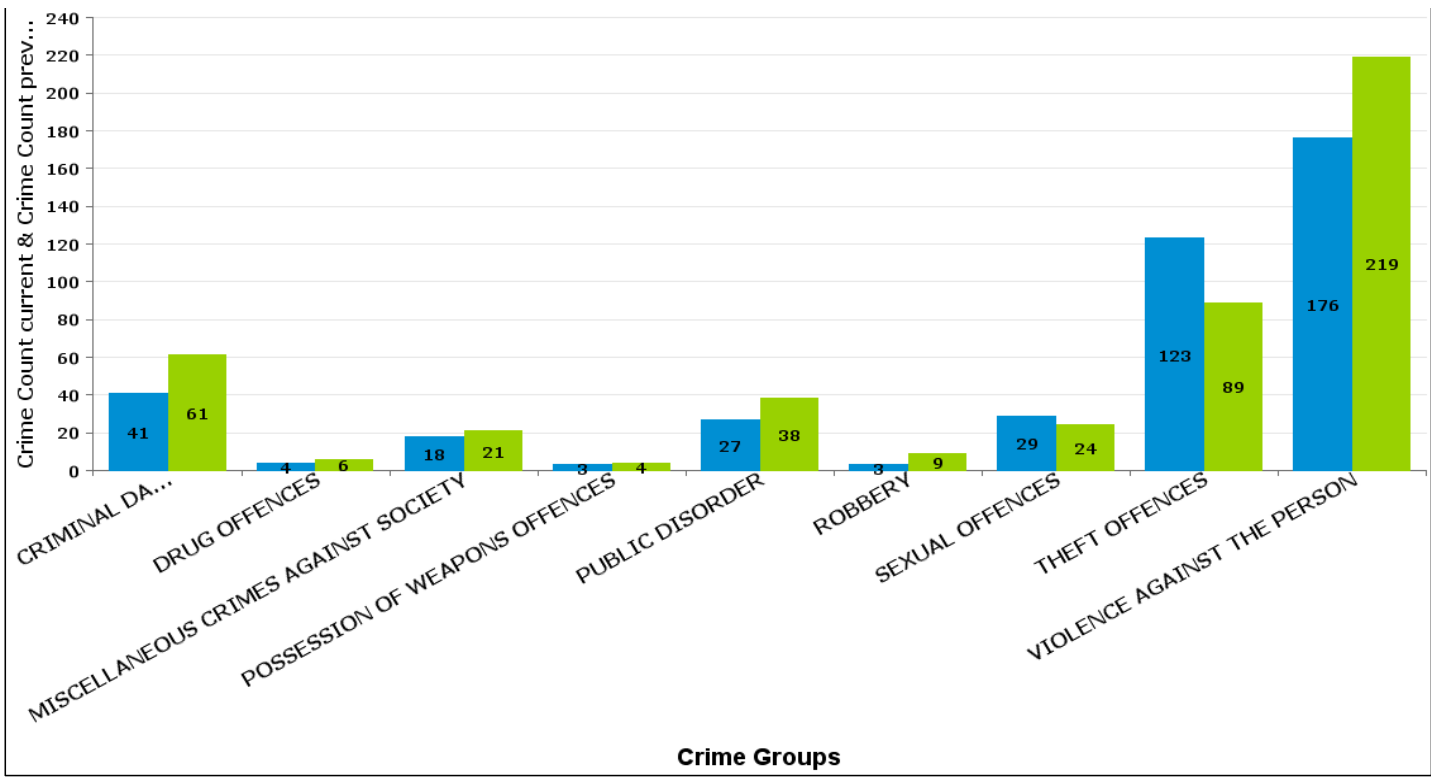
DESBOROUGH LOATLAND

Crime Group	Current 12 Months	Previous 12 Months	+/- Crime	% Change	Number of Resolved Crimes	Resolution Rate (12 Months)
CRIMINAL DAMAGE & ARSON	41	61	-20	-32.79%	3	7.32%
DRUG OFFENCES	4	6	-2	-33.33%	8	200.00%
MISCELLANEOUS CRIMES AGAINST SOCIETY	18	21	-3	-14.29%	2	11.11%
POSSESSION OF WEAPONS OFFENCES	3	4	-1	-25.00%	1	33.33%
PUBLIC DISORDER	27	38	-11	-28.95%	4	14.81%
ROBBERY	3	9	-6	-66.67%	1	33.33%
SEXUAL OFFENCES	29	24	5	20.83%	1	3.45%
THEFT OFFENCES	123	89	34	38.20%	5	4.07%
VIOLENCE AGAINST THE PERSON	176	219	-43	-19.63%	19	10.80%
Sum:	424	471	-47	-9.98%	44	10.38%



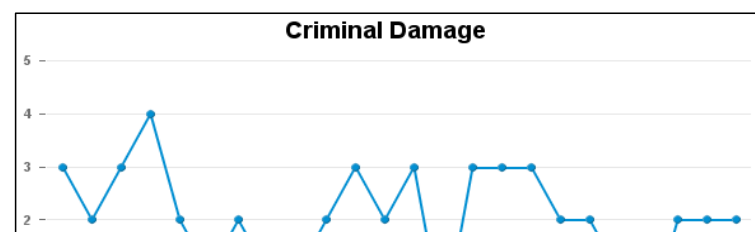
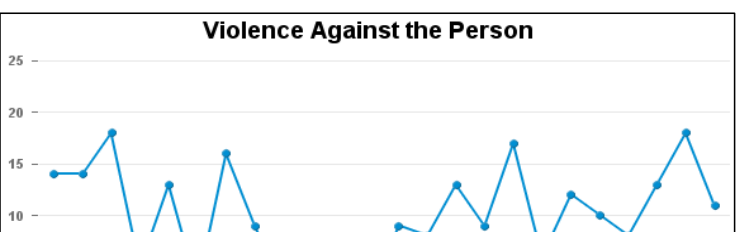
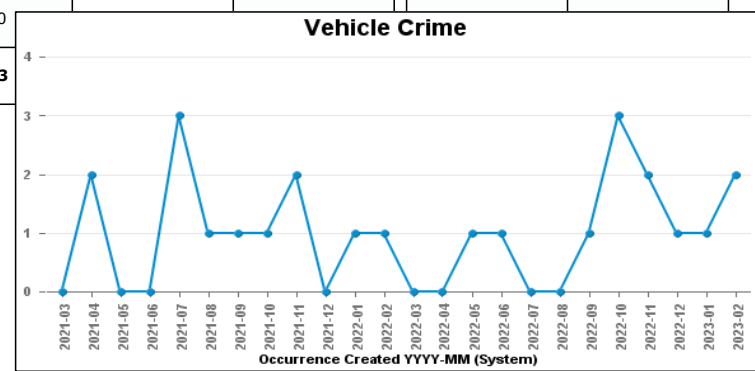
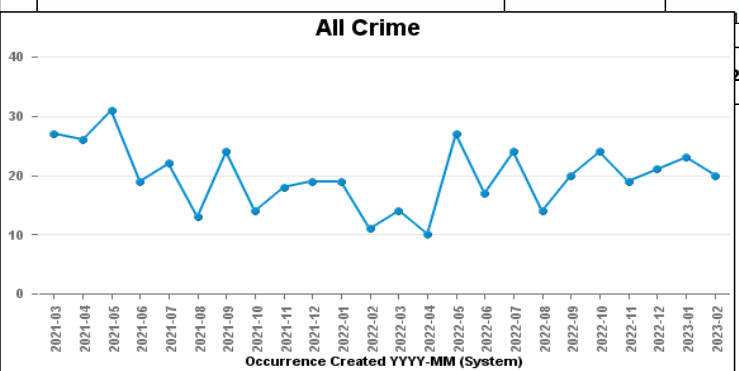
Crime

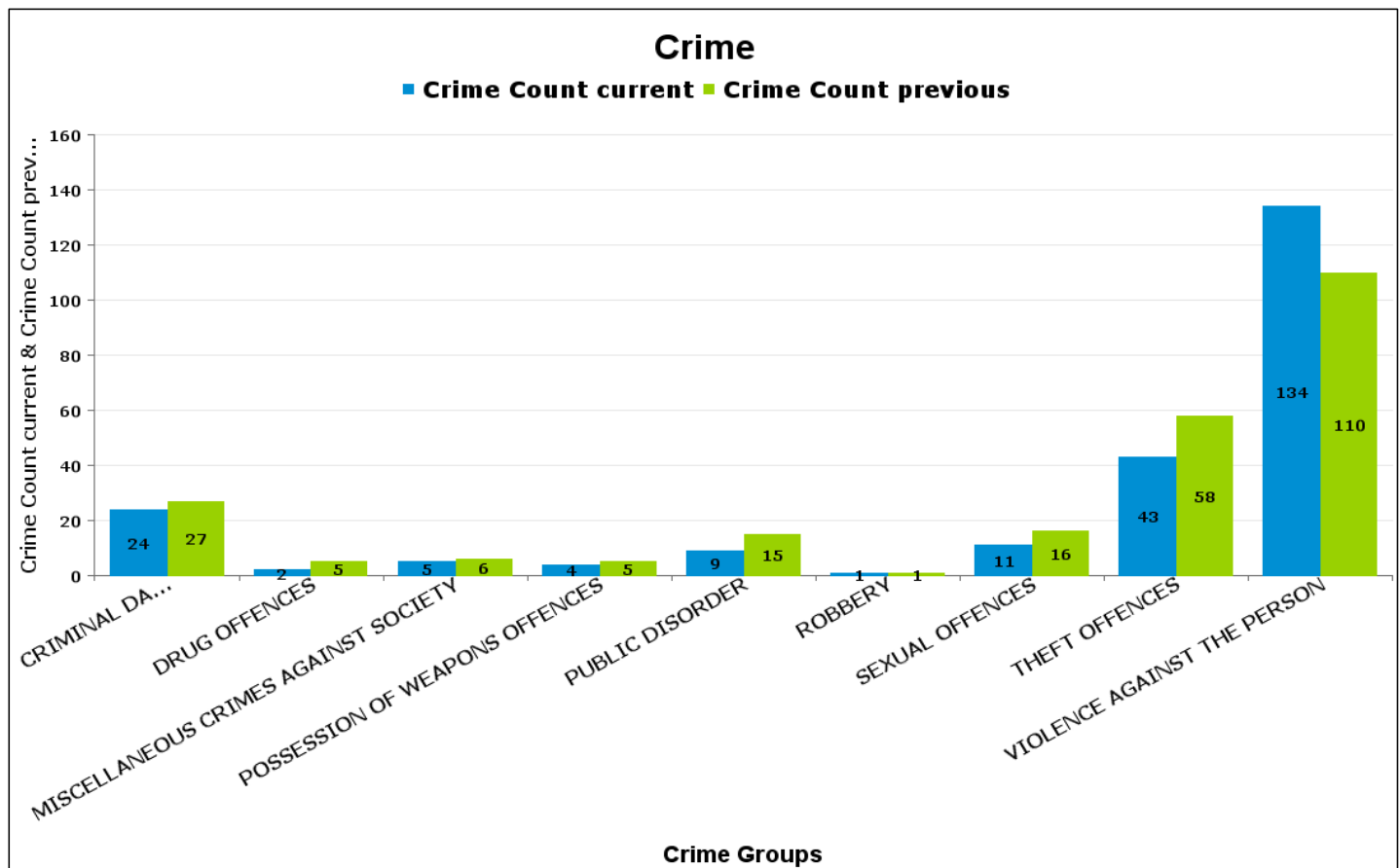
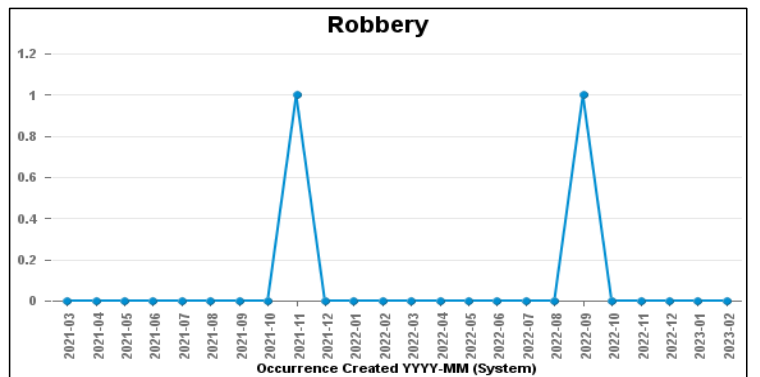
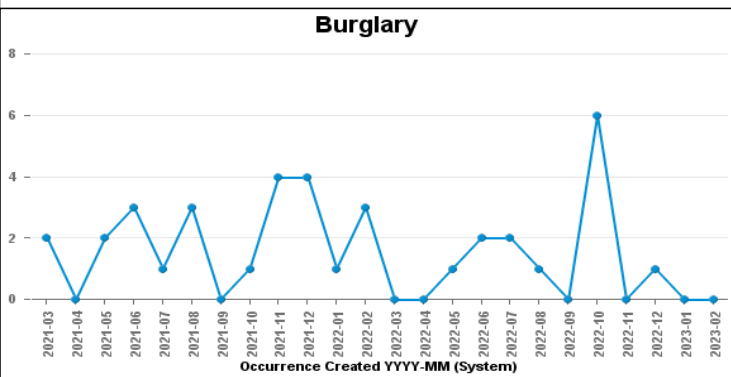
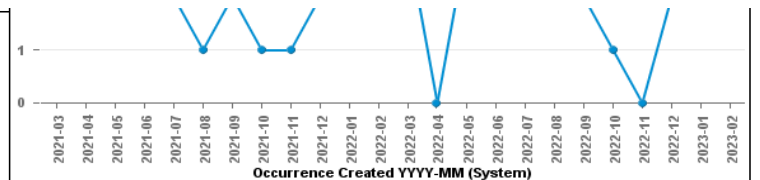
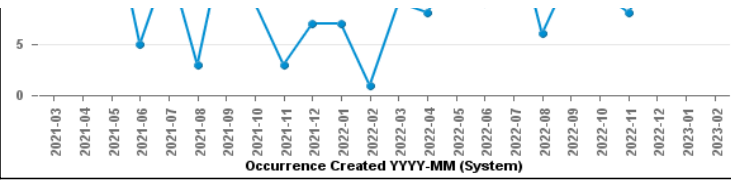
■ Crime Count current ■ Crime Count previous

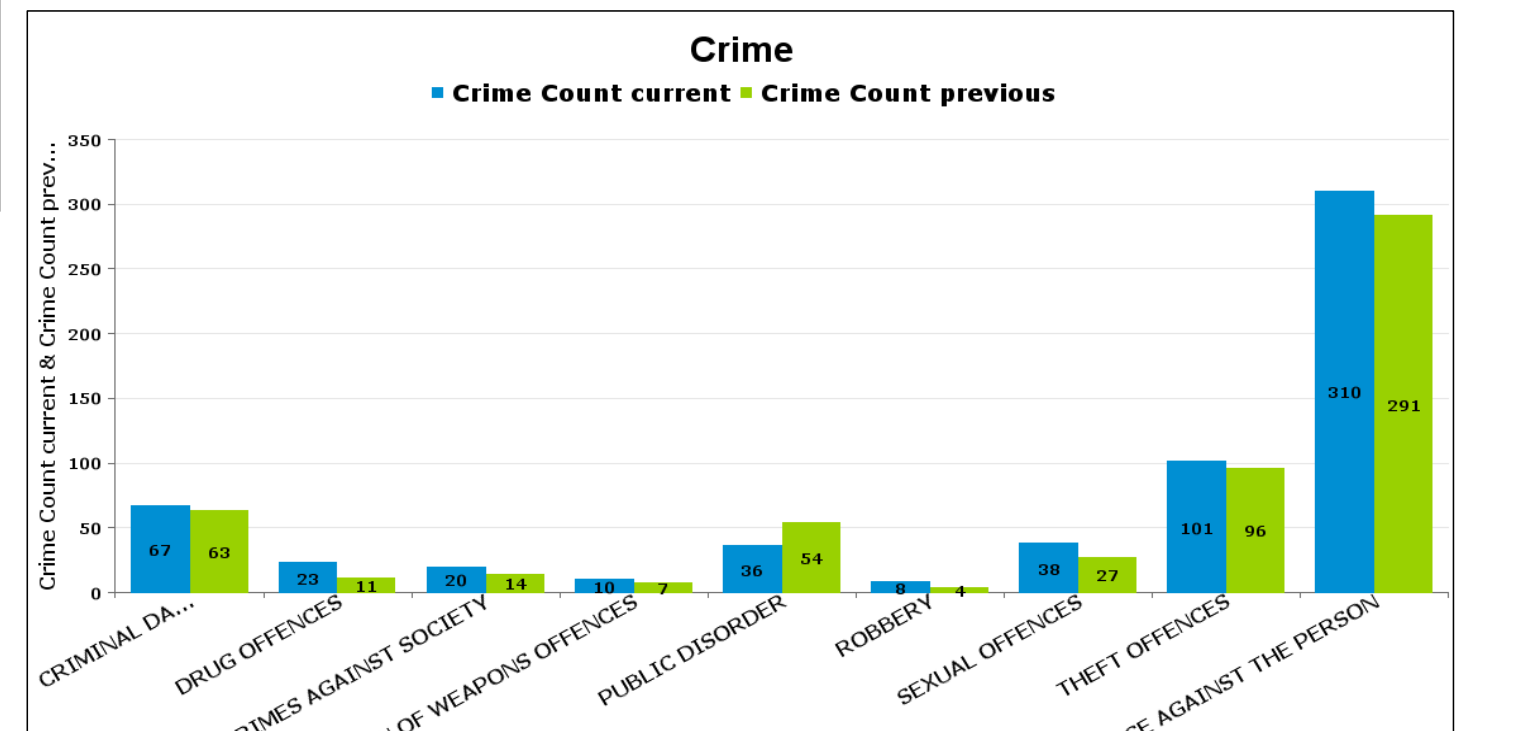
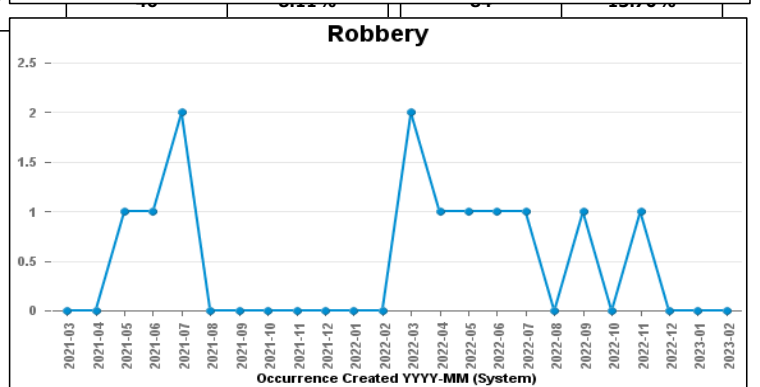
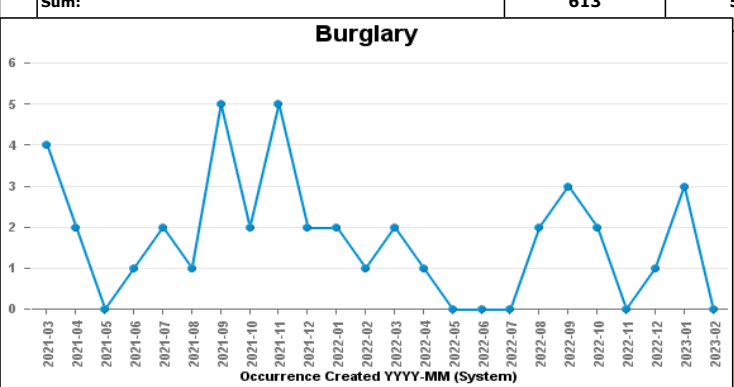
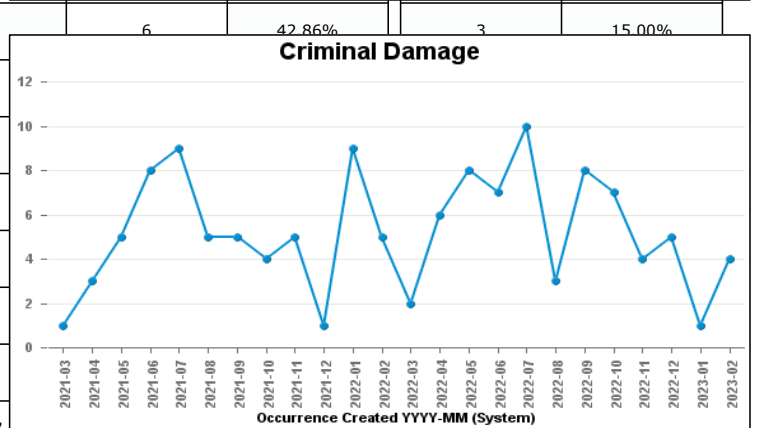
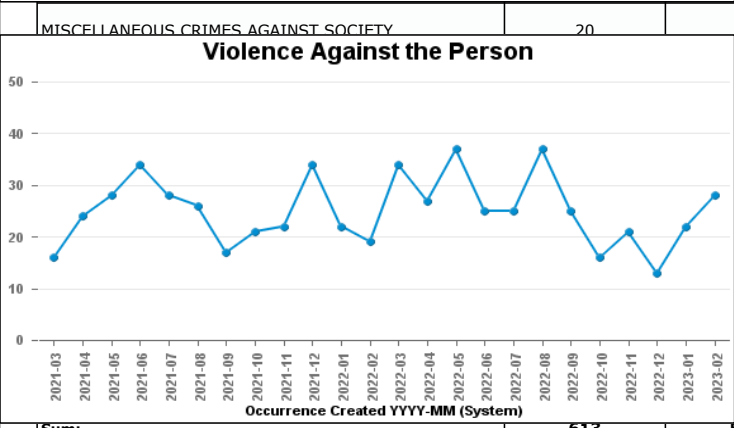
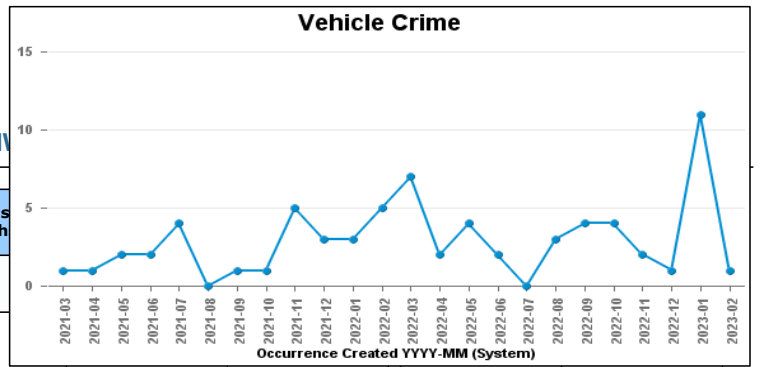
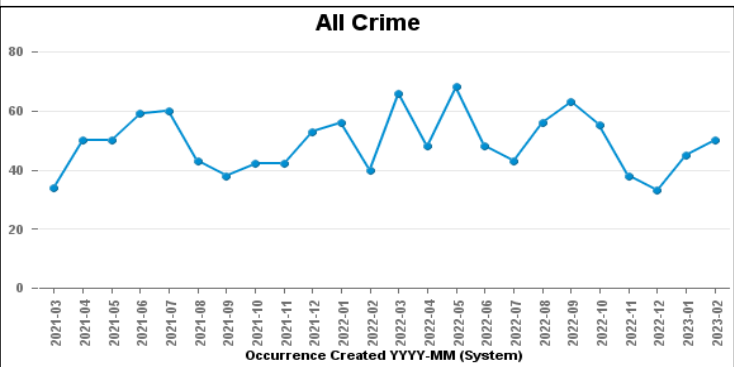


DESBOROUGH ST GILES

Crime Group	Current 12 Months	Previous 12 Months	+/- Crime	% Change	Number of Resolved Crimes	Resolution Rate (12 Months)
CRIMINAL DAMAGE & ARSON	24	27	-3	-11.11%	3	12.50%
DRUG OFFENCES	2	5	-3	-60.00%	5	250.00%
MISCELLANEOUS CRIMES AGAINST SOCIETY	5	6	-1	-16.67%	1	20.00%
POSSESSION OF WEAPONS OFFENCES	4	5	-1	-20.00%	0	0.00%
PUBLIC DISORDER	9	15	-6	-40.00%	0	0.00%
ROBBERY	1	1	0	0.00%	0	0.00%
SEXUAL OFFENCES	11	16	-5	-31.25%	2	18.18%
THEFT OFFENCES	43	58	-15	-25.86%	3	6.98%







MISCELLANEOUS CR.

POSSESSION

VIOLENCE

Crime Groups