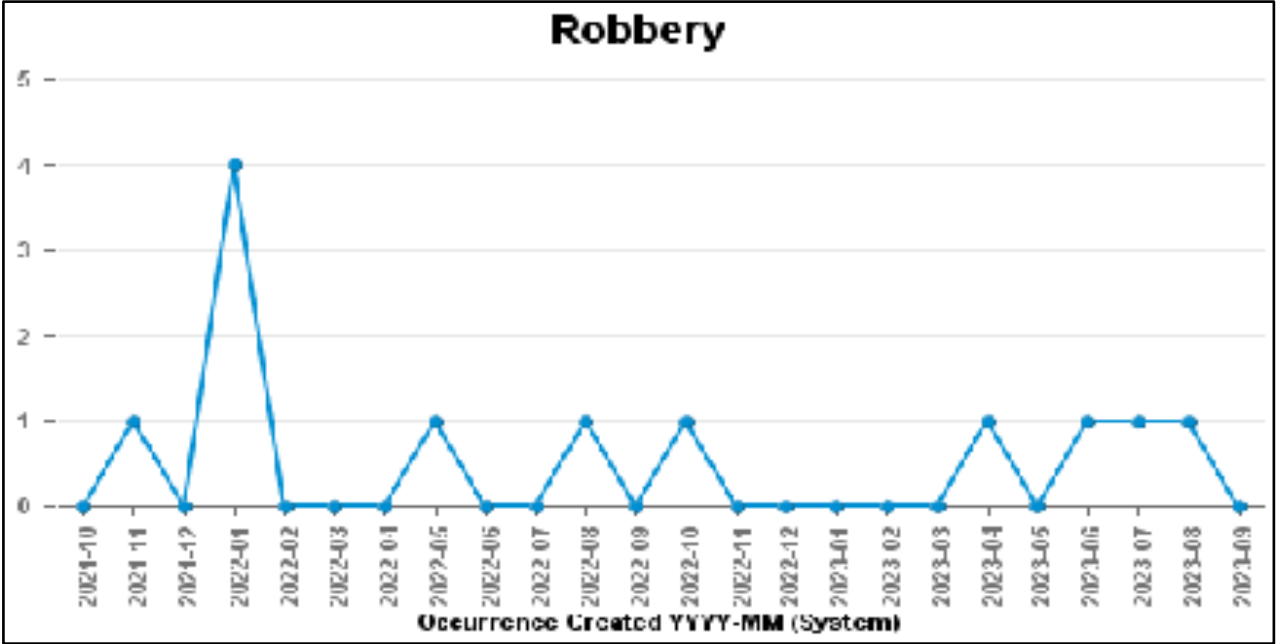
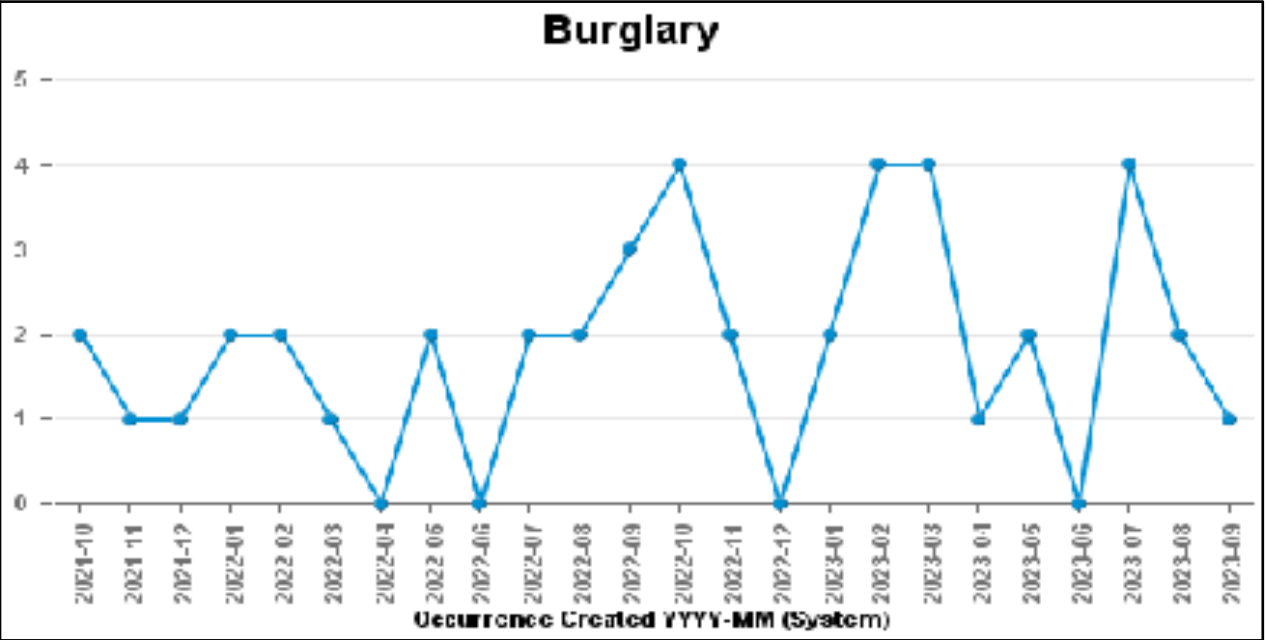
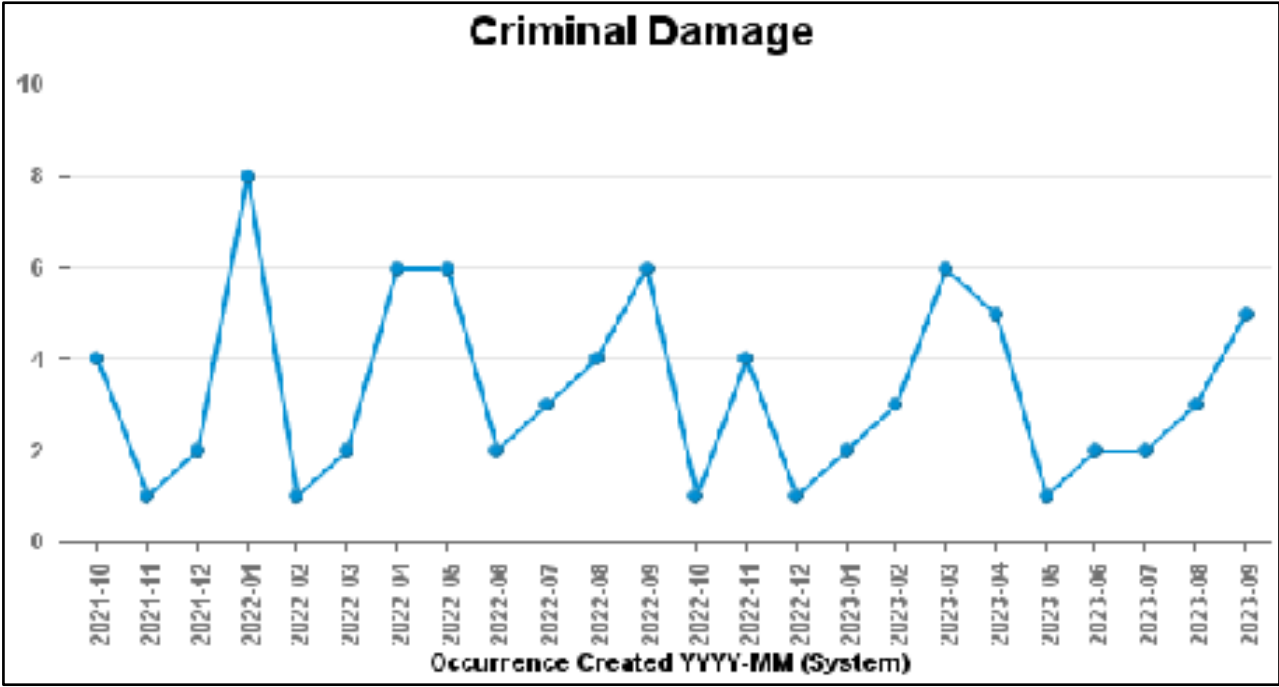
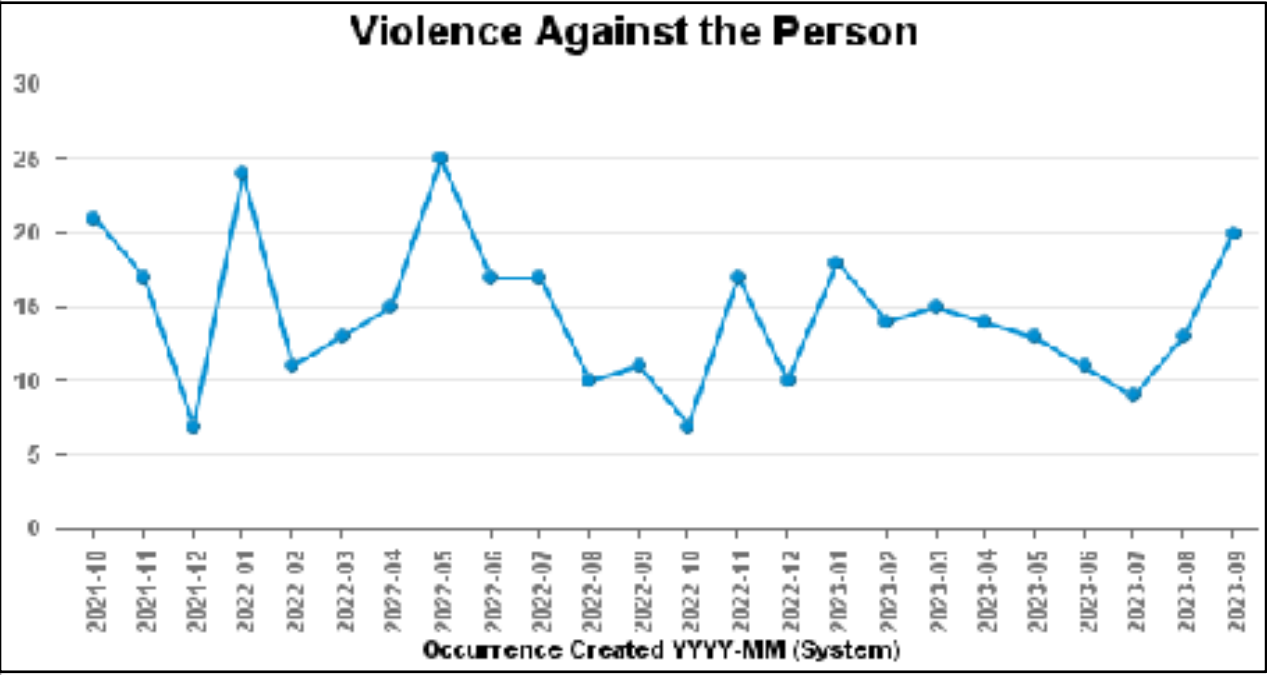
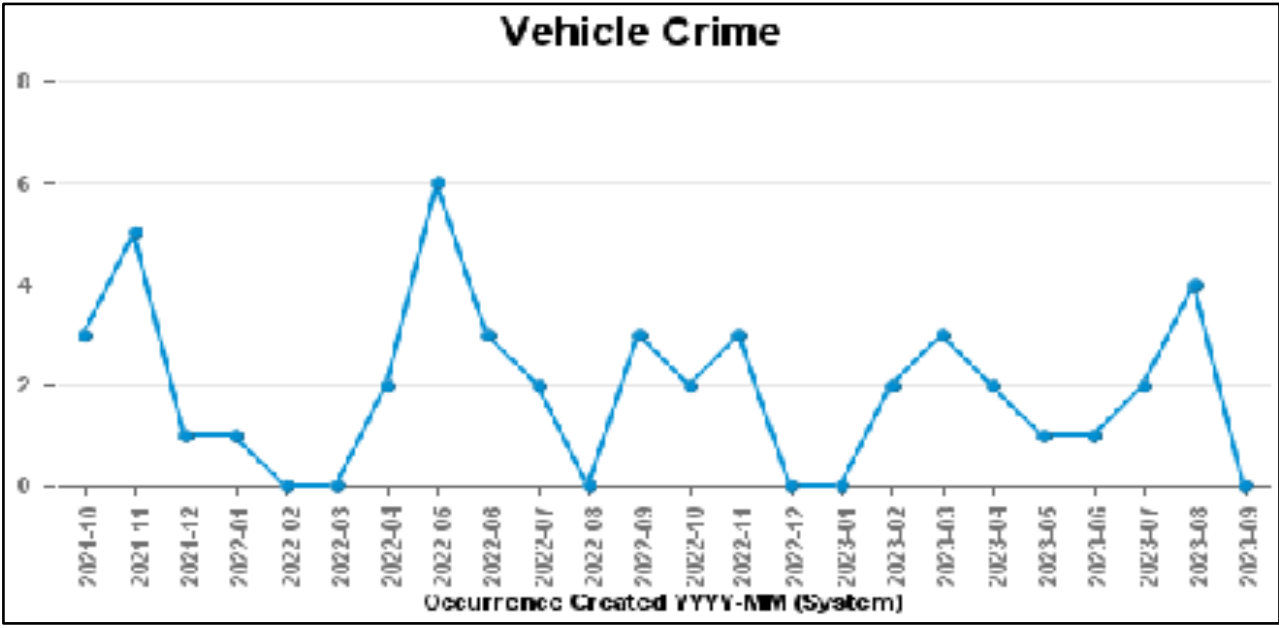
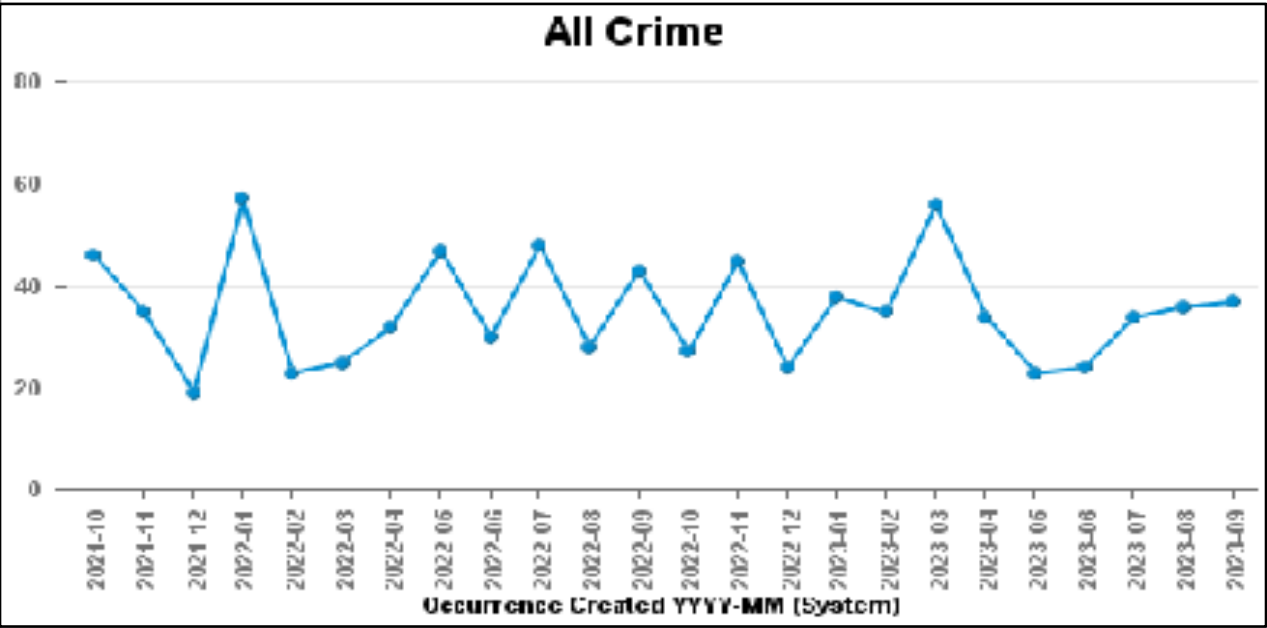
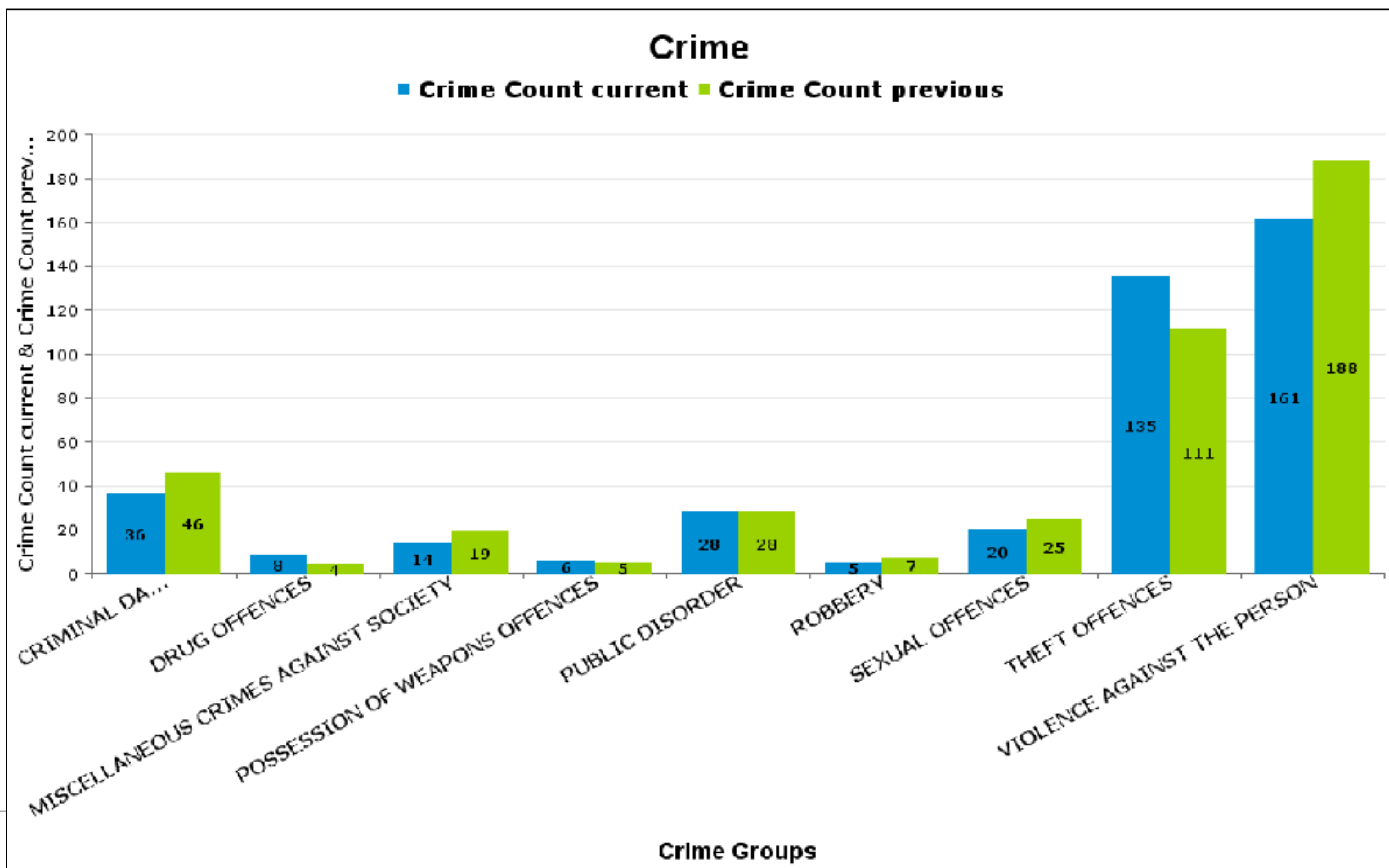


DESBOROUGH LOATLAND

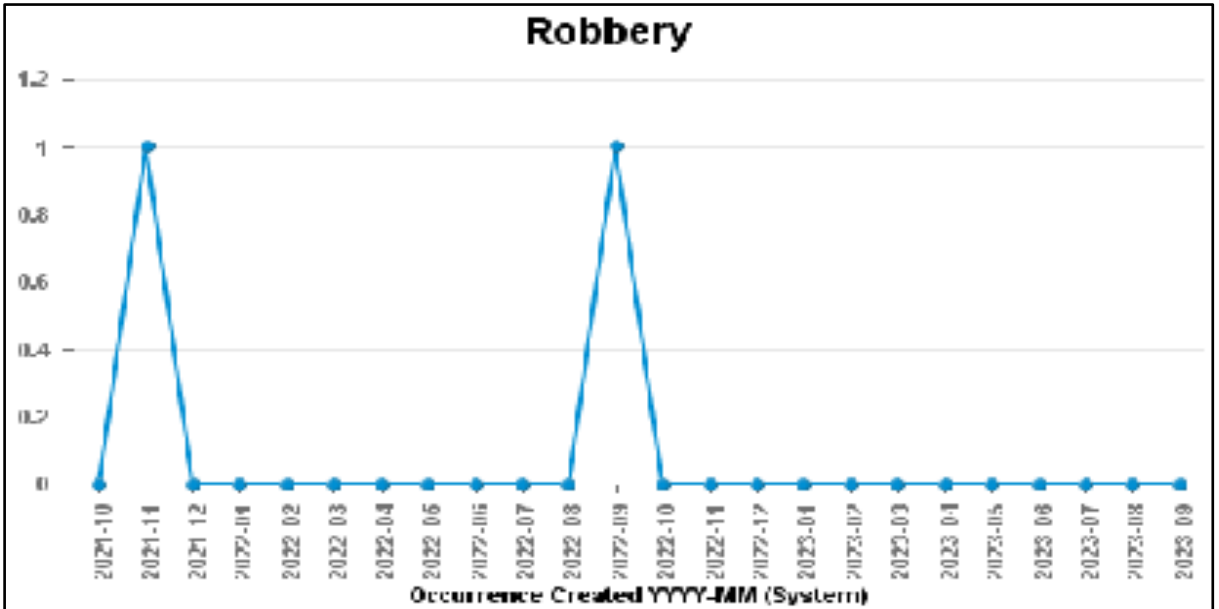
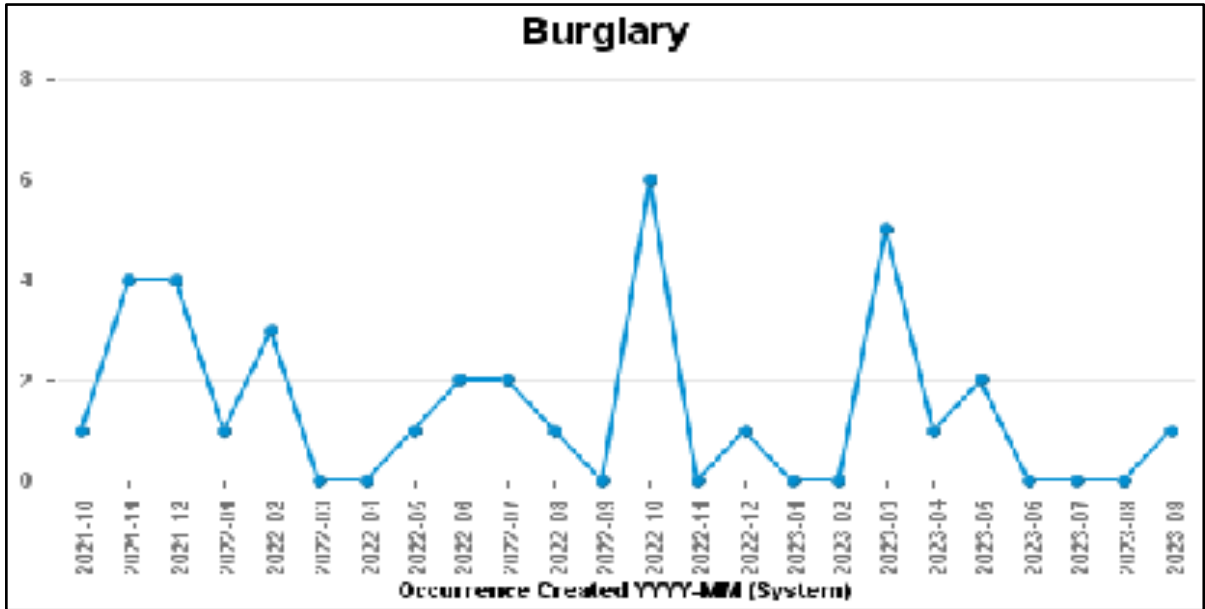
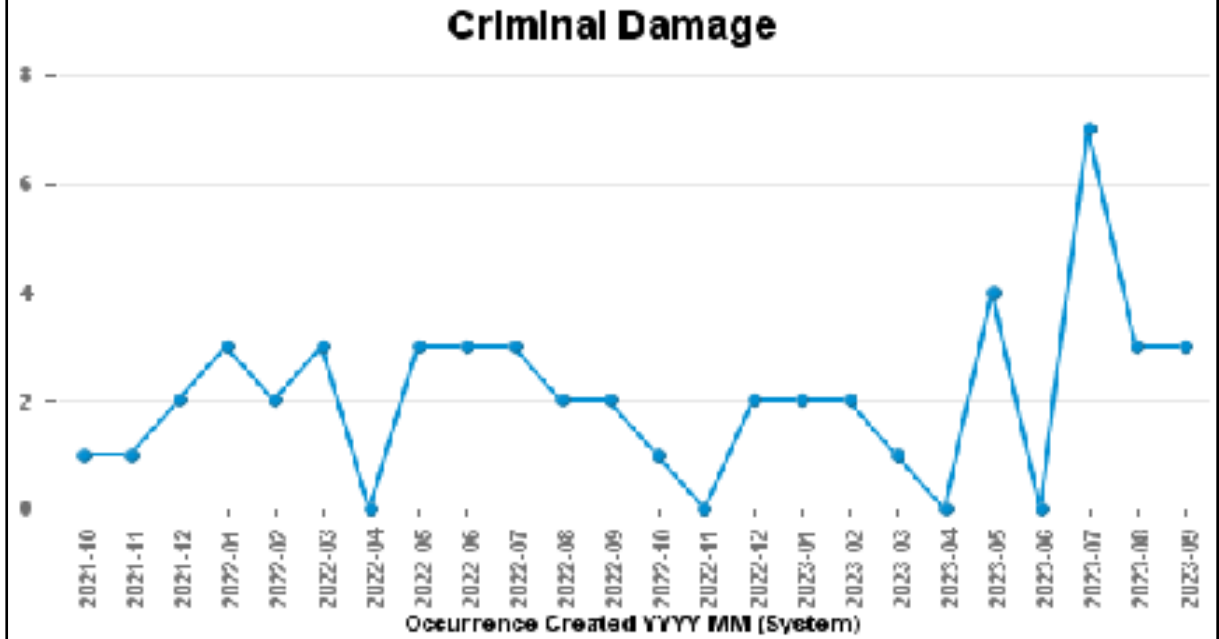
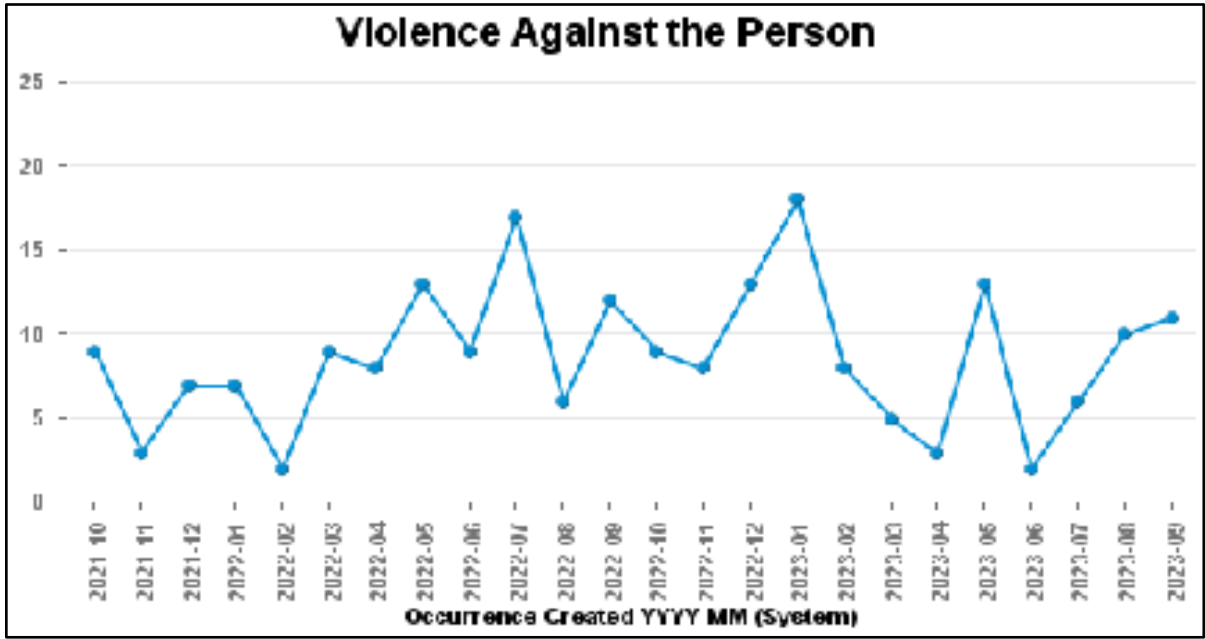
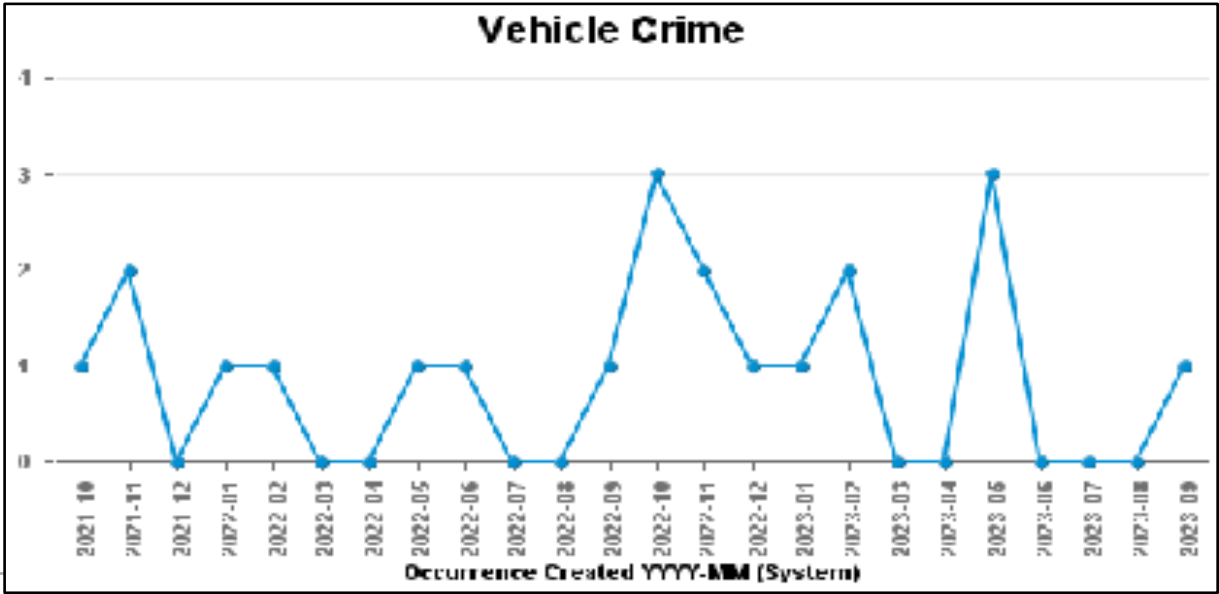
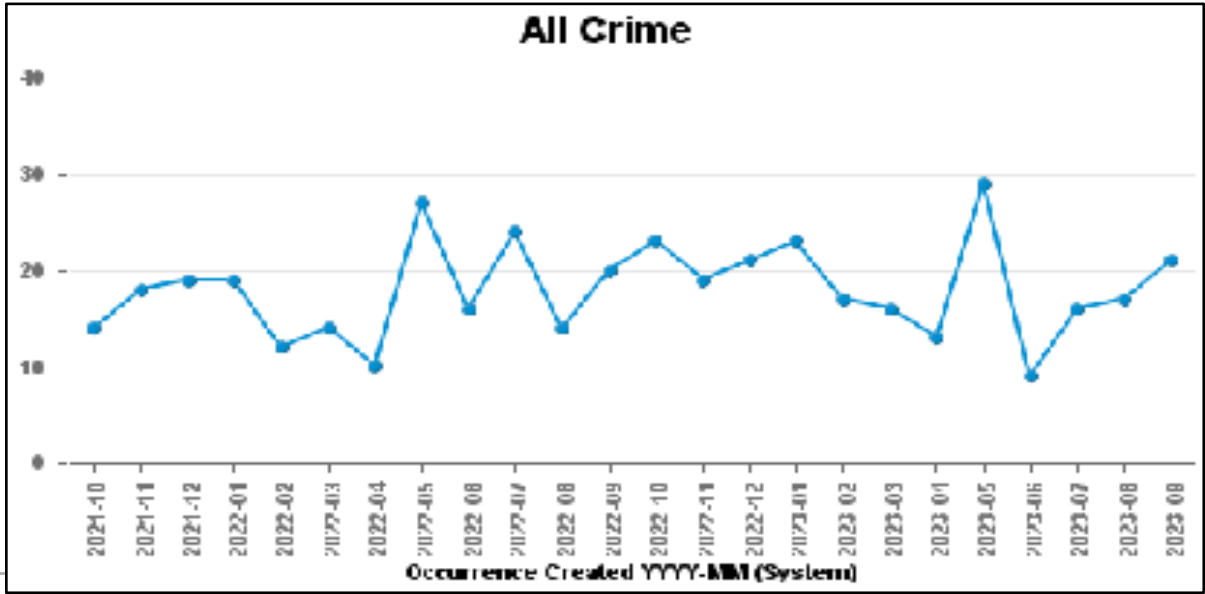
Crime Group	Current 12 Months	Previous 12 Months	+/- Crime	% Change	Number of Resolved Crimes	Resolution Rate (12 Months)
CRIMINAL DAMAGE & ARSON	36	46	-10	-21.74%	5	13.89%
DRUG OFFENCES	8	4	4	100.00%	4	50.00%
MISCELLANEOUS CRIMES AGAINST SOCIETY	14	19	-5	-26.32%	3	21.43%
POSSESSION OF WEAPONS OFFENCES	6	5	1	20.00%	0	0.00%
PUBLIC DISORDER	28	28	0	0.00%	6	21.43%
ROBBERY	5	7	-2	-28.57%	2	40.00%
SEXUAL OFFENCES	20	25	-5	-20.00%	0	0.00%
THEFT OFFENCES	135	111	24	21.62%	10	7.41%
VIOLENCE AGAINST THE PERSON	161	188	-27	-14.36%	25	15.53%
Sum:	413	433	-20	-4.62%	55	13.32%

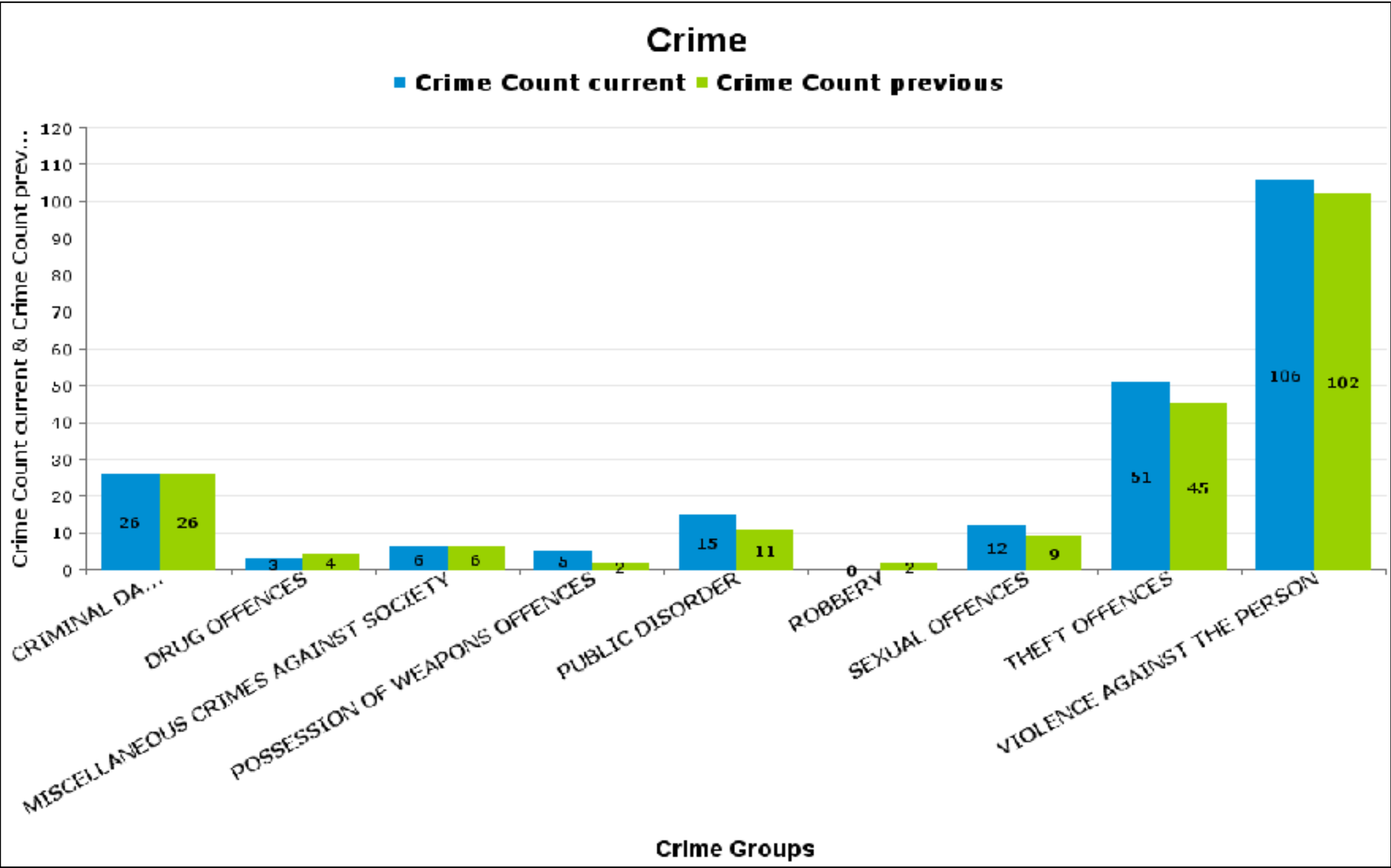




DESBOROUGH ST GILES

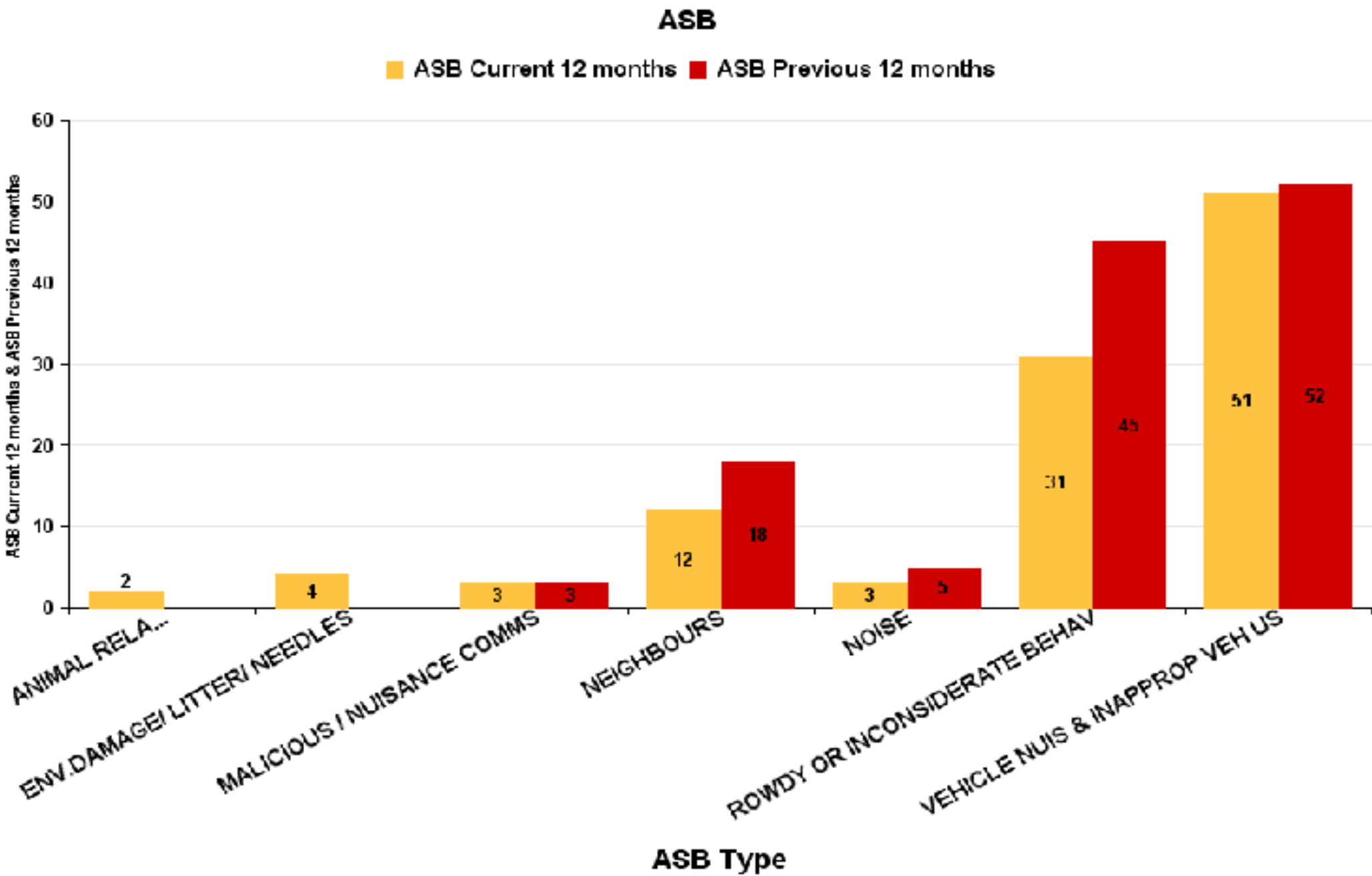
Crime Group	Current 12 Months	Previous 12 Months	+/- Crime	% Change	Number of Resolved Crimes	Resolution Rate (12 Months)
CRIMINAL DAMAGE & ARSON	26	26	0	0.00%	8	30.77%
DRUG OFFENCES	3	4	-1	-25.00%	6	200.00%
MISCELLANEOUS CRIMES AGAINST SOCIETY	6	6	0	0.00%	0	0.00%
POSSESSION OF WEAPONS OFFENCES	5	2	3	150.00%	0	0.00%
PUBLIC DISORDER	15	11	4	36.36%	0	0.00%
ROBBERY	0	2	-2	-100.00%	0	#DIV/0
SEXUAL OFFENCES	12	9	3	33.33%	4	33.33%
THEFT OFFENCES	51	45	6	13.33%	3	5.88%
VIOLENCE AGAINST THE PERSON	106	102	4	3.92%	10	9.43%
Sum:	224	207	17	8.21%	31	13.84%





Desborough Loatland

ASB Type	Current 12 mths	Previous 12 mths	+/- Crime	% Change
ANIMAL RELATED INC ANTI-SOCIAL	2		2	-100.00%
ENV.DAMAGE/ LITTER/ NEEDLES	4		4	-100.00%
MALICIOUS / NUISANCE COMMS	3	3	0	0.00%
NEIGHBOURS	12	18	-6	-33.33%
NOISE	3	5	-2	-40.00%
ROWDY OR INCONSIDERATE BEHAV	31	45	-14	-31.11%
VEHICLE NUIS & INAPPROP VEH US	51	52	-1	-1.92%
Sum:	106	123	-17	-13.82%



Desborough St Giles

ASB Type	Current 12 mths	Previous 12 mths	+ / - Crime	% Change
ANIMAL RELATED INC ANTI-SOCIAL	1	2	-1	-50.00%
BEGGING / VAGRANCY	2		2	-100.00%
ENV.DAMAGE/ LITTER/ NEEDLES		1	-1	-100.00%
MALICIOUS / NUISANCE COMMS	2	3	-1	-33.33%
NEIGHBOURS	5	6	-1	-16.67%
NOISE		4	-4	-100.00%
ROWDY OR INCONSIDERATE BEHAV	27	27	0	0.00%
TRESPASS	2	2	0	0.00%
VEHICLE NUIS & INAPPROP VEH US	11	28	-17	-60.71%
Sum:	50	73	-23	-31.51%

